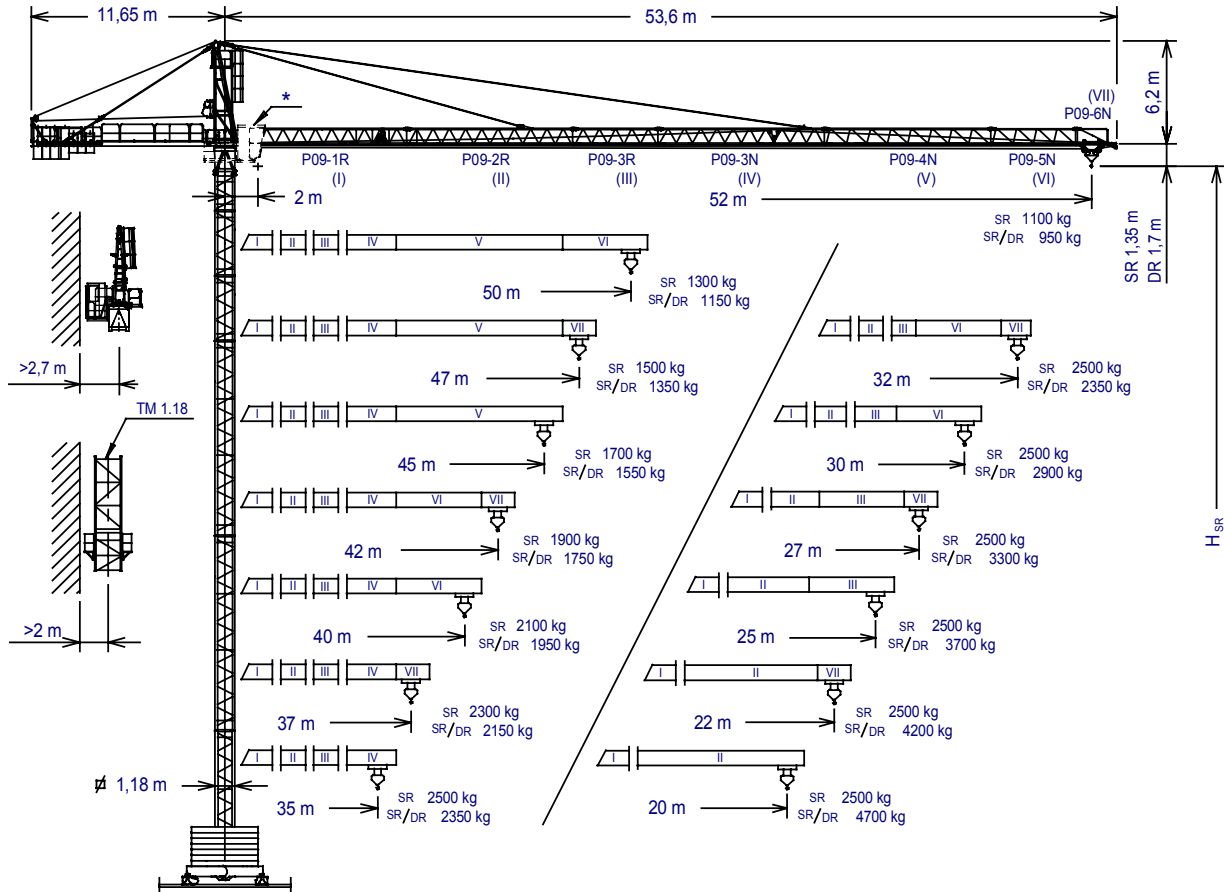


# GRUA TORRE TOWER CRANE

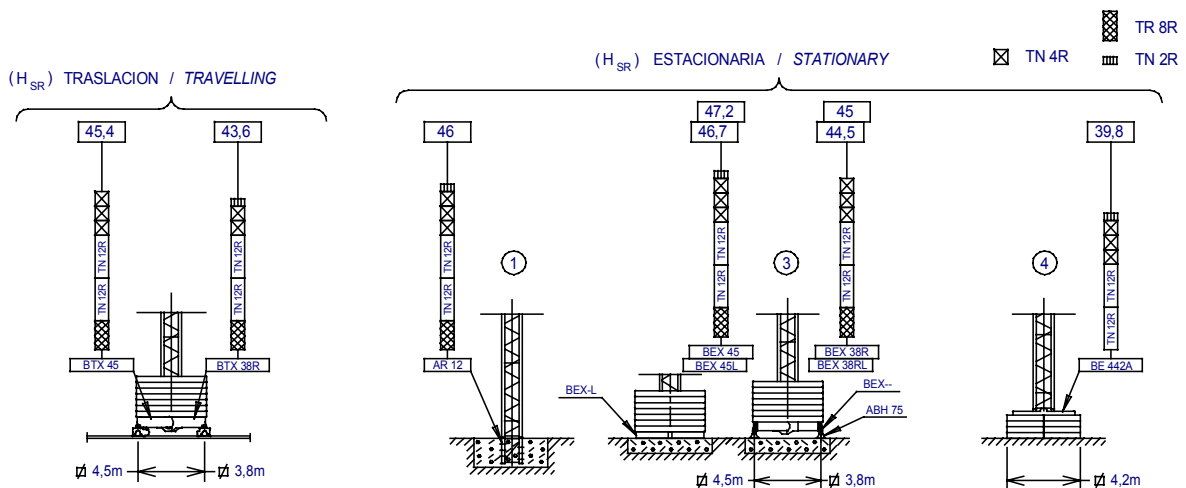
# J52NS

UNE 58-101-92  
FEM 1001-87  
Directivas de nivel de potencia acústica / Sound power level directives  
84/534/CEE & 87/405/CEE  
Directivas de máquinas / Machinery directives  
89/392/CEE & 91/368/CEE

SISTEMA DE CALIDAD CERTIFICADO SEGUN  
QUALITY ASSURANCE SYSTEM CERTIFIED ACCORDING TO  
UNE-EN-ISO 9001



<p>* opcional * optional</p> <p><math>H_{DR} = H_{SR} - 0,35</math></p> <p><math>H_{SR}</math> = Altura máxima bajo gancho sin arriostar (m). Maximum height under hook without fastening (m). Con cabina bajar <math>H_{SR}</math> 2m. Lower <math>H_{SR}</math> 2m with cabin.</p>	P09-1R	152.40.500	BTX 45 / BEX 45	137.20.500
	P09-2R	152.41.000	BTX 38R / BEX 38R	137.20.000
	P09-3R	152.42.000	ABH 75	152.23.000
	P09-3N	149.42.000	AR 12	137.21.000
	P09-4N	149.43.000	BE 442A	138.24.000
	P09-5N	149.44.000	TM 1.18	137.35.000
	P09-6N	149.45.000	TN 2R	152.32.000



## JASO EQUIPOS DE OBRAS Y CONSTRUCCIONES, S.L.

Fecha / Date: 18-05-06 - Reservado el derecho a modificaciones sin previo aviso / Subject to modification, without previous warning

لحميا SR (kg)		Cargas máximas Maximum loads													2000-2500 a
SR (kg)		Alcance del gancho (m)						Hook reach (m)							
PLUMA JIB		52	50	47	45	42	40	37	35	32	30	27	25	22	20
52 m	1100	1155	1240	1310	1420	1500	1645	1750	1940	2080	2340	2500	2500	2500	31,10-25,43 m
50 m	---	1300	1400	1470	1595	1685	1840	1960	2165	2325	2500	2500	2500	2500	34,37-28,10 m
47 m	---	---	1500	1575	1705	1805	1970	2095	2315	2485	2500	2500	2500	2500	36,50-29,84 m
45 m	---	---	---	1700	1840	1940	2120	2255	2490	2500	2500	2500	2500	2500	38,97-31,86 m
42 m	---	---	---	---	1900	2005	2190	2330	2500	2500	2500	2500	2500	2500	40,12-32,8 m
40 m	---	---	---	---	---	2100	2290	2435	2500	2500	2500	2500	2500	2500	40-34,16 m
37 m	---	---	---	---	---	---	2300	2445	2500	2500	2500	2500	2500	2500	37-34,3 m
35 m	---	---	---	---	---	---	---	2500	2500	2500	2500	2500	2500	2500	35 m
32 m	---	---	---	---	---	---	---	---	2500	2500	2500	2500	2500	2500	32 m
30 m	---	---	---	---	---	---	---	---	---	2500	2500	2500	2500	2500	30 m
27 m	---	---	---	---	---	---	---	---	---	---	2500	2500	2500	2500	27 m
25 m	---	---	---	---	---	---	---	---	---	---	---	2500	2500	2500	25 m
22 m	---	---	---	---	---	---	---	---	---	---	---	---	2500	2500	22 m
20 m	---	---	---	---	---	---	---	---	---	---	---	---	---	2500	20 m

لحميا / لحميا SR / DR (kg)		Cargas máximas Maximum loads													2000 4000	2500 5000	a	
SR / DR (kg)		Alcance del gancho (m)						Hook reach (m)										
PLUMA JIB		52	50	47	45	42	40	37	35	32	30	27	25	22	20	15		
52 m	950	1005	1090	1160	1270	1350	1495	1600	1785	1930	2190	2395	2500 2775	2500 3095	2500 4255	29,15 15,87	24,11 12,92	m
50 m	---	1150	1250	1320	1445	1535	1690	1810	2015	2175	2460	2500 2690	2500 3110	2500 3460	2500 4745	32,21 17,54	26,64 14,28	m
47 m	---	---	1350	1425	1555	1655	1820	1945	2165	2335	2500 2640	2500 2880	2500 3325	2500 3700	2500 5000	34,21 18,62	28,29 15,17	m
45 m	---	---	---	1550	1690	1790	1970	2105	2340	2500 2520	2500 2845	2500 3100	2500 3580	2500 3975	2500 5000	36,52 19,88	30,20 16,19	m
42 m	---	---	---	---	1750	1855	2040	2180	2420	2500 2605	2500 2940	2500 3205	2500 3695	2500 4105	2500 5000	37,60 20,47	31,10 16,67	m
40 m	---	---	---	---	---	1950	2140	2285	2500 2535	2500 2730	2500 3075	2500 3355	2500 3865	2500 4290	2500 5000	39,16 21,32	32,38 17,36	m
37 m	---	---	---	---	---	---	2150	2295	2500 2545	2500 2740	2500 3090	2500 3370	2500 3880	2500 4310	2500 5000	37 21,40	32,51 17,43	m
35 m	---	---	---	---	---	---	---	2350	2500 2605	2500 2805	2500 3160	2500 3445	2500 3970	2500 4405	2500 5000	35 21,84	33,18 17,79	m
32 m	---	---	---	---	---	---	---	---	2350	2500 2530	2500 2855	2500 3115	2500 3595	2500 3995	2500 5000	32 19,97	30,34 16,26	m
30 m	---	---	---	---	---	---	---	---	---	2500 2900	2500 3265	2500 3560	2500 4095	2500 4545	2500 5000	30 22,48	30 18,31	m
27 m	---	---	---	---	---	---	---	---	---	---	2500 3300	2500 3595	2500 4140	2500 4590	2500 5000	27 22,69	27 18,48	m
25 m	---	---	---	---	---	---	---	---	---	---	---	2500 3700	2500 4255	2500 4720	2500 5000	25 23,29	25 18,97	m
22 m	---	---	---	---	---	---	---	---	---	---	---	---	2500 4200	2500 4670	2500 5000	22 22	22 18,73	m
20 m	---	---	---	---	---	---	---	---	---	---	---	---	---	2500 4700	2500 5000	20 20	20 18,88	m

CARACTERÍSTICAS DE MECANISMOS MECHANISMS FEATURES				Mecanismos sin VF: Para 480V Potencias y velocidades: 20% más. Mechanisms without VF: For 60Hz Powers and speeds: 20% more					
*opcional *optional									
		EC2566 SR2	EC2580 SR1	* EC2566 VF SR2	* EC33100 VF SR2	3,8/4,5m TG825 VF	OG1108VF	TC 360 VF	
	t m/min	1,3   2,5   2,5 64   32   8	1,1   2   2 82   41   10	1,3   2,5 0...64   0...32	1,1   2,5 0...102   0...51	0...25 m/min	0...0,2 0,2...0,4 0,4...0,8	0...15 15...30 30...60	
	t m/min	2,6   5   5 32   16   4	2,2   4   4 41   20,5   5	2,6   5 0...32   0...16	2,2   5 0...51   0...25,5		r/min	m/min	
kW		18,4			24,2		2x3	2X4	1,8
Maximo recorrido gancho Maximum hook course		SR 138 m en 3 capas/layers 189 m en 4 capas máx./max. layers			DR 69 m en 3 capas/layers 94,5 m en 4 capas máx./max. layers		400V 50Hz	Potencia necesaria Required power	34,2 kW *40 kW
IMPORTANTE: A medida que la altura bajo gancho de la grúa aumenta, disminuirá la capacidad de carga. Consultar el capítulo de capacidad de carga (04.015.00) del apartado del mecanismo de elevación del manual del fabricante.				IMPORTANT: When the height under hook increases, the hoisting load will decrease. Consult the chapter of load capacity (04.015.00) of the hoisting mechanism of the manufacturer's handbook.					



DENOMINACION DENOMINATION		L (m)	A (m)	H (m)	Peso (kg) Weight (kg)	
Torre Tower section	TR 8R	8,07	1,19	1,19	2575	
	TN 12R-TR 12R	12,01	1,19	1,19	2915-3715	
	TN 4R	4,15	1,19	1,19	1170	
	TN 2R	2,37	1,19	1,19	770	
Torre asiento de pista+Base punta torre+Orientación. Slewing table+Tower head base+Slewing mechanism		3,14	1,92	2,15	2540	
Estructura punta de torre+elevación Tower head structure+hoisting		6,48	1,20	2,41	2250	
Torre asiento pista+punta torre+orientación+elevación Slewing table+Tower head+slewing+hoisting		8,12	1,92	2,44	4790	
Tramo pluma Jib section	P09-1R(I)	10,13	0,87	1,13	1032	
	P09-2R(II)	10,16	0,87	1,14	940	
	P09-3R(III)	5,27	0,87	1,14	425	
	P09-3N(IV)	10,15	0,87	1,12	880	
	P09-4N(V)	10,15	0,87	1,03	575	
	P09-5N(VI)	5,26	0,87	1,02	295	
	P09-6N(VII)	2,13	0,86	1,02	110	
Polipasto Hook assembly	SR	0,76	0,16	0,96	135	
	DR	0,76	0,20	1,40	170	
Carro Crab	SR	1,00	1,33	0,73	110	
	DR	1,04	1,37	0,88	175	
Contrapluma con plataformas Counterjib with platforms		10,70	1,41	0,43	1575	
Plataforma y cabina Platform and cabin		3,69	1,63	2,25	820	
Base grúa Crane base	Estacionaria III/Stationary III	BEX 38R	6,38	0,84	1,47	3800
		BEX 45	7,37	0,84	1,47	4380
	Traslación/Travelling	BTX 38R	6,02	1,73	1,73	5230
		BTX 45	7,01	1,62	1,73	5995
Contrapeso Counterweight	Grande / Big	1,08	0,50	2,02	2360	
	Pequeño / Small	1,08	0,50	1,30	1500	
Lastre Ballast	Est. III-Stationary III / Trasl.-Travelling	4,00	0,34	1,30	4100	
	Est. IV / Stationary IV	2,09	0,34	2,10	3450	
Torre de montaje Jacking cage		7,14	1,76	1,71	3105	

LASTRES INFERIORES / LOWER BALLASTS			Para alturas intermedias tomar el lastre correspondiente a la altura superior For intermediate heights take the ballast corresponding to the higher height						
Altura bajo gancho (m) / Height under hook (m)			16	22	30	36	40	44	47
Número de piedras de lastre Number of ballast blocks	Est. III Stationary III Trasl. Travelling	Piedras:4100 kg Blocks:4100 kg	BEX 45 / BTX 45	6	8	10	12	14	—
			BEX 45L	8		10	12	14	—
		BEX 38R / BTX 38R	6	8	10	12	14	—	
		BEX 38RL	8		10	12	14	—	
	Est. IV Stationary IV	Piedras:3450 kg Blocks:3450 kg	BE 442A	hasta 31,6m 12 piedras until 31,6m 12 blocks			hasta 39,8m 16 piedras until 39,8m 16 blocks		



TORRES / TOWERS	ALTURA / HEIGHT (m)	Diagrama de la torre			ALTURA / HEIGHT (m)	TORRES / TOWERS
1	4,5	TN 4R	137.32.000	TN 4R	4,5	1
2	8,5	TN 4R		TN 4R	8,5	2
3	20,3	TN 12R	137.31.000	TN 12R	20,3	3
4	32,1	TN 12R		TN 12R	32,1	4
5	39,9	TR 8R	137.30.000	TR 8R	39,9	5
6	43,6	T 3-90	133.32.000	TN 17	45,3	6
7	46,6	TD 3-90	133.32.500	TND 17	49,6	7
8	49,6	AN 90	133.21.000	AN 17	54	8
		AND 90	133.21.800	AND 17/20/23	58,3	9
		AN 17	141.21.000	AND 17/20/23	62,7	10
		AND 17/20/23	142.21.800	ANDC 17/20/23	67	11
		ANDC 17/20/23	142.21.700	AR 17	71,3	12
		AR 17	141.21.500	ARD 17/20/23		
		ARD 17/20/23	142.21.900	ARDC 17/20/23		
		ARDC 17/20/23	142.21.600			


  

AN 90	133.21.000	CC	Con cabina
AND 90	133.21.800	SC	Sin cabina
AN 17	141.21.000		
AND 17/20/23	142.21.800		
ANDC 17/20/23	142.21.700		
AR 17	141.21.500		
ARD 17/20/23	142.21.900		
ARDC 17/20/23	142.21.600		

Para otras configuraciones de torre, consultar con nuestro Dpto. Técnico  
For other tower configurations, consult our Technical Dpt.

Transporte grúa de 45,4 m bajo gancho con traslación y sin lastre  
45,4 m under hook crane transport with travelling base and without base ballast

En camiones / In trucks



3 unidades / 3 units

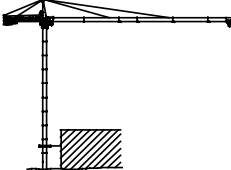
En contenedores / In containers

HIGH CUBE

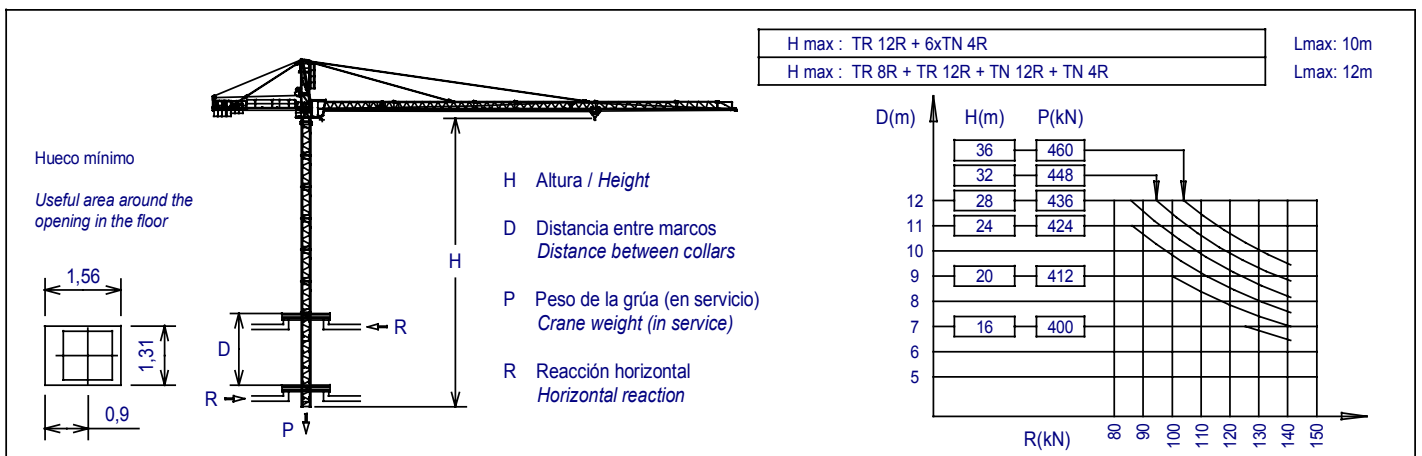
2 unidades / 2 units

BOX

1 unidad / 1 unit



Máximo número de torres TN 4R a colocar por encima del último arriostamiento: 8  
Maximum TN 4R mast sections above the last tie-back: 8



JASO EQUIPOS DE OBRAS  
Y CONSTRUCCIONES. S.L

Ctra./Rd. Madrid - Irún Km. 415  
20.213 IDIAZABAL (Gipuzkoa)  
ESPAÑA / SPAIN  
P.O. Box, 23 - 20.200 BEASAIN

Tel. +34 943 - 18 70 00  
Fax. +34 943 - 18 70 20  
E-mail: jaso@jaso.com  
http://www.jaso.com

Fecha / Date: 18-05-06

Reservado el derecho a modificaciones sin previo aviso / Subject to modification, without previous warning

DELEGACION / DELEGATION