

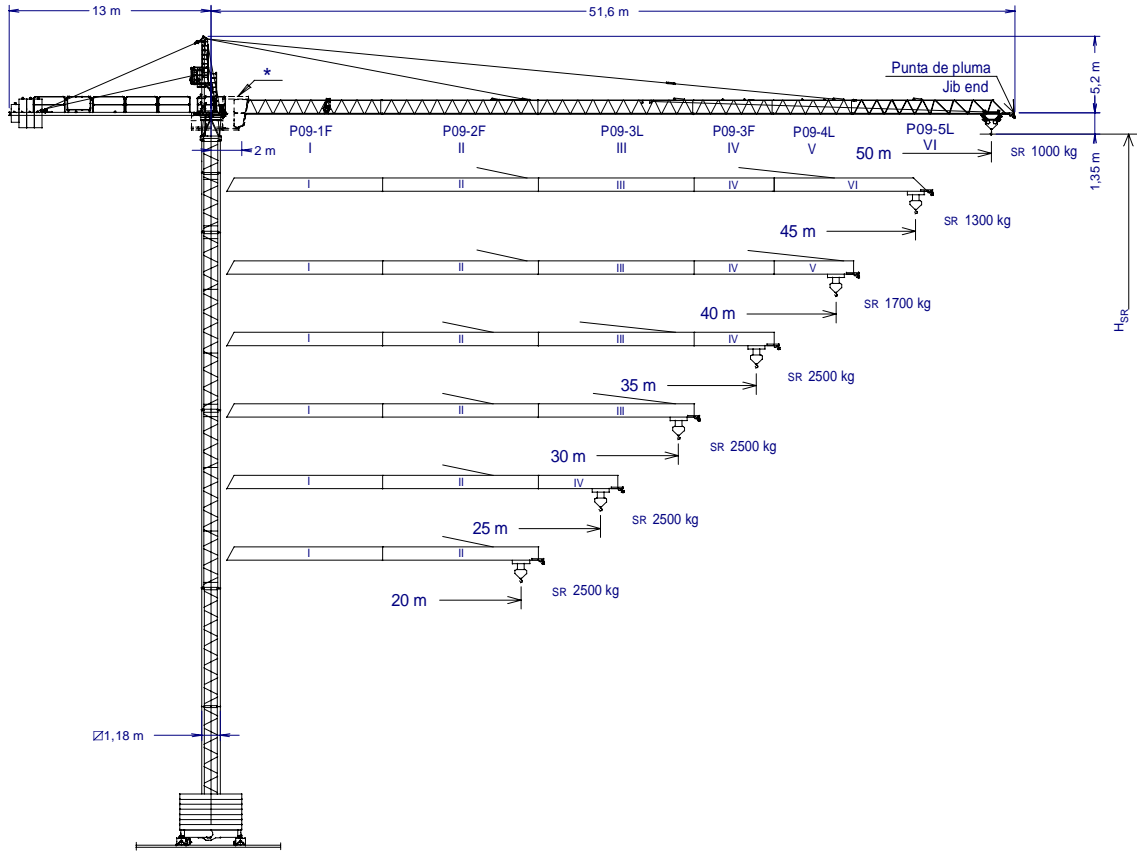
# GRUA TORRE TOWER CRANE

SERIE L

# J5010

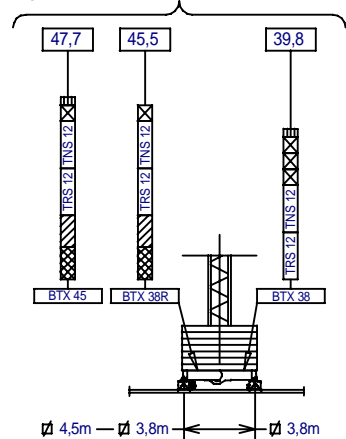
UNE 58-101-92  
FEM 1001-87  
Directivas de nivel de potencia acústica / Sound power level directives  
84/534/CEE & 87/405/CEE  
Directivas de máquinas / Machinery directives  
89/392/CEE & 91/368/CEE

SISTEMA DE CALIDAD CERTIFICADO SEGUN  
QUALITY ASSURANCE SYSTEM CERTIFIED ACCORDING TO  
UNE-EN-ISO 9001

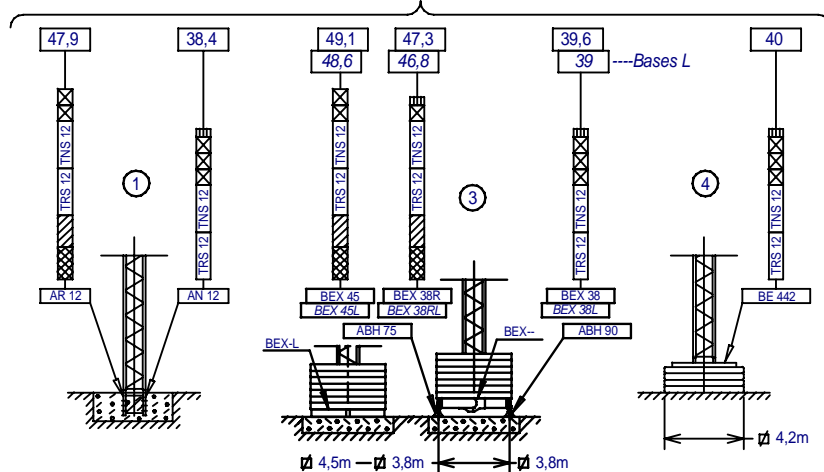


<p>*Cabina opcional *Optional cabin</p> <p><math>H_{SR}</math> = Altura máxima bajo gancho sin arriostar (m). Maximum height under hook without fastening (m). Con cabina bajar <math>H_{SR}</math> 2m. Lower <math>H_{SR}</math> 2m with cabin.</p>	P09-1F	157.40.000	TN2	146.32.500
	P09-2F	157.41.000	BTX 45/BEX 45	137.20.500
	P09-3L	155.42.000	BTX 38R/BEX 38R	137.20.000
	P09-3F	157.43.000	BTX 38/BEX 38	149.20.000
	P09-4L	155.43.000	BEX 45L	155.23.500
	P09-5L	155.44.500	BEX 38RL	155.23.800
	Punta de pluma / Jib end	155.45.000	BEX 38L	155.23.000
	TRS 12	155.31.000	ABH 75	152.23.000
	TNS 12	155.31.500	ABH 90	146.23.000
	TRS 8R	155.30.500	AR 12	137.21.000
	TR 8	146.30.500	AN 12	146.21.000
	TNS 4	155.32.000	BE 442	146.24.000

( $H_{SR}$ ) TRASLACION / TRAVELLING





( $H_{SR}$ ) ESTACIONARIA / STATIONARY



JASO EQUIPOS DE OBRAS Y CONSTRUCCIONES, S.L.


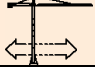
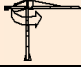
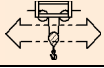


Fecha / Date: 22-01-07 - Reservado el derecho a modificaciones sin previo aviso / Subject to modification, without previous warning

		SR1 (kg)						Cargas máximas / Maximum loads SR1 - 2000	
PLUMA JIB	Alcance del gancho (m) / Hook reach (m)							2000 kg a ... (m)	
	50	45	40	35	30	25	20		
50 m	1000	1135	1300	1515	1800	2000	2000	27,27	
45 m	—	1300	1490	1730	2000	2000	2000	30,68	
40 m	—	—	1700	1970	2000	2000	2000	34,54	
35 m	—	—	—	2000	2000	2000	2000	35	
30 m	—	—	—	—	2000	2000	2000	30	
25 m	—	—	—	—	—	2000	2000	25	
20 m	—	—	—	—	—	—	2000	20	

		SR2 (kg)						Cargas máximas / Maximum loads SR2 - 2500	
PLUMA JIB	Alcance del gancho (m) / Hook reach (m)							2500 kg a ... (m)	
	50	45	40	35	30	25	20		
50 m	1000	1135	1300	1515	1800	2200	2500	22,22	
45 m	—	1300	1490	1730	2050	2500	2500	25	
40 m	—	—	1700	1970	2335	2500	2500	28,14	
35 m	—	—	—	2500	2500	2500	2500	35	
30 m	—	—	—	—	2500	2500	2500	30	
25 m	—	—	—	—	—	2500	2500	25	
20 m	—	—	—	—	—	—	2500	20	

**CARACTERISTICAS DE MECANISMOS  
MECHANISMS FEATURES**

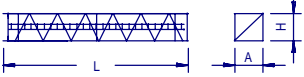


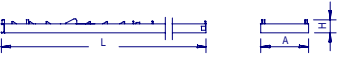
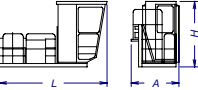
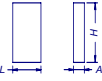

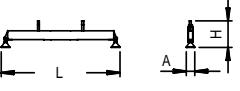

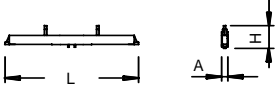
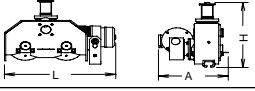


Mecanismos sin VF: Para 480V Potencias y velocidades: 20% más  
Mechanisms without VF: For 60Hz Powers and speeds: 20% more

*opcional *optional									
	EC1846 SR2	EC1856 SR1	*EC2566 SR2	*EC2580 SR1	*EC2566VF SR2	*EC2580VF SR1	3,8 / 4,5m TG825VF	OG608VF	TC360 *TC360VF
 $t$ m/min	1,3   2,5   2,5 46   23   5	1,1   2   2 56   28   6	1,3   2,5   2,5 64   32   8	1,1   2   2 82   41   10	1,3   2,5 0..64   0..32	1,1   2 0..82   0..41	0...25 m/min	0...0,4 0,4...0,8 r/min sl/min	30/60 m/min  *0...30 *30...60 m/min
kW	13,2		18,4				2 x 3	4	1,9 *1,8
Máx. recorrido gancho Maximum hook course	SR 88 m 3 capas/layers 193 m 6 capas máx./ max. layers		SR 138 m 3 capas/layers 189 m 4 capas máx./ max. layers				 400V 50Hz Potencia necesaria ... Power required ... 25,1kW *30,2kW		

IMPORTANTE: A medida que la altura bajo gancho aumenta, disminuirá la capacidad de carga. Consultar el capítulo de capacidad de carga (04.015.00) del apartado del mecanismo de elevación del Manual del Fabricante.

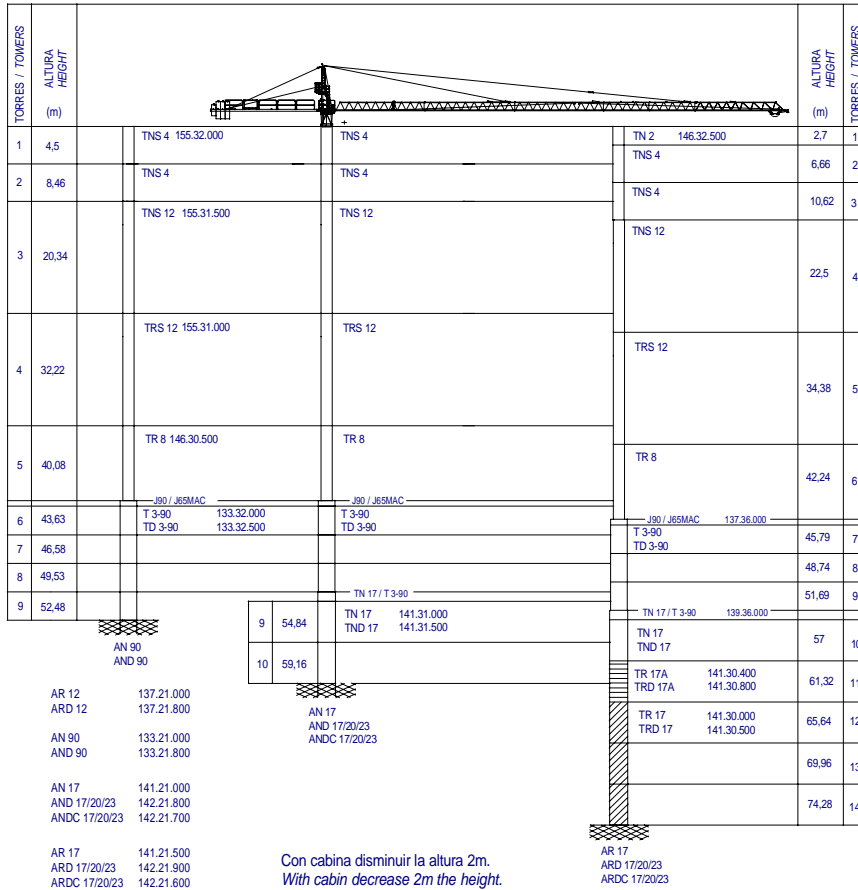
IMPORTANT: When the height under hook increases, the hoisting load will decrease. Consult the chapter of load capacity (04.015.00) of the hoisting mechanism of the Manufacturer's Handbook.



DENOMINACION / DENOMINATION			L (m)	A (m)	H (m)	P / W (kg)	
Torre Tower	TRS 8R – TR 8		8,07	1,19	1,19	2575-2515	
	TRS 12 – TNS 12		12,01	1,19	1,19	2840-2780	
	TNS 4		4,09	1,19	1,19	1055	
	TN 2		2,29	1,19	1,19	785	
Conjunto asiento pista, punta de torre, orientación y elevación <i>Slewing table assembly, tower head, slewing and hoisting mechanism</i>				6,97	1,65	2,42	4090
Tramo pluma Jib section	P09 1F (I)		10,15	1	1,16	705	
	P09 2F (II)		10,15	0,86	1,09	560	
	P09 3L (III)		10,15	0,86	1,09	565	
	P09 3F (IV)		5,26	0,86	1,03	235	
	P09 4L (V)		5,26	0,86	1,09	250	
	P09 5L (VI)		10,12	0,86	1,09	407	
Polipasto Hook assembly	SR			0,76	0,16	0,96	135
Carro Crab	SR			0,10	1,33	0,73	110
Contrapluma con plataformas <i>Counterjib with platforms</i>				11,95	1,35	0,4	942
Plataforma y cabina <i>Platform and cabin</i>				3,69	1,63	2,25	820
Contrapeso Counterweight	Grande / Big			1,08	0,50	2,02	2360
	Pequeño / Small			1,08	0,50	1,30	1500
Base grúa Testero largo Crane base Long carriage	Con apoyos Estacionaria III <i>With supports Stationary III</i>	BTX 38 BTX 38R BTX 45		6,11 6,11 7,01	0,64 0,64 0,64	1,53 1,57 1,57	1576 1792 2065
	Sin apoyos Estacionaria III <i>Without supports Stationary III</i>	BTX 38L BTX 38RL BTX 45L		5,46 5,46 4,01	0,55 0,55 0,55	0,97 0,88 0,88	1160 850 660
	Sin mecanismo trasl <i>Without travelling mechanism</i>	BEX 38 BEX 38R BEX 45		5,56 5,56 6,55	0,3 0,3 0,3	1,27 1,40 1,41	1390 1590 1863
Mecanismo traslación grúa <i>Crane travelling mechanism</i>				0,96	0,56	0,66	293
Lastre Ballast	Est. III-Trasl. <i>Stationary III-Travelling</i>	∅3,8m -∅4,5m		4,00	0,34	1,30	4100
	Est.IV/Stationary IV	BE 442		2,09	0,34	2,10	3450

LASTRES INFERIORES / LOWER BALLASTS				Para alturas intermedias tomar el lastre correspondiente a la altura superior <i>For intermediate heights take the ballast corresponding to the higher height</i>						
Altura bajo gancho (m)/Height under hook (m)				18	22	30	40	46	49	
Número de piedras de lastre Grúa sin cabina <i>Number of ballast blocks Crane without cabin</i>	Est. III <i>Stationary III Trasl. Travelling</i>	Piedras:4100 kg <i>Blocks: 4100 kg</i>	BEX 45 / BTX 45	6		8	10	12	14	
			BEX 45L	8		10	12	14		
			BEX 38R / BTX 38R	6	8	10	12	14	----	
			BEX 38 / BTX 38	6	8	10	12	----	----	
			BEX 38RL	8		10	12	14	----	
	BEX 38L	8		10	12	----	----			
Est. IV <i>Stationary IV</i>	Piedras:3450 kg <i>Blocks: 3450 kg</i>	BE 442	hasta 31,6m 12 piedras <i>until 31,6m 12 blocks</i>				hasta 40m 16 piedras <i>until 40m 16 blocks</i>			





Las configuraciones de torre representadas son recomendaciones de montaje que pueden ser utilizadas en cualquier instalación. Cada tramo de torre, en la posición indicada, puede asimismo ser utilizado como elemento inferior de torre en grúa autoestable estándar con su correspondiente altura bajo gancho.

Configuraciones de torre para mayores alturas bajo gancho o con diferentes tramos de torre no representadas aquí, pueden ser también posibles aunque deben ser verificadas y confirmadas por escrito por nuestro departamento técnico en cada caso individual y antes de que empiece la instalación de la grúa.

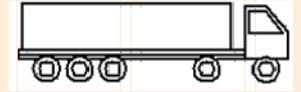
The represented tower configurations are assembly recommendations that can be used in any installation. Each tower section in its indicated position can also be used as the lower element of the mast tower in standard freestanding crane with its corresponding height under hook.

Tower configurations not shown here, with greater heights under hook or with different tower sections, are also possible but must be checked and confirmed in writing by our technical department in every individual case and before crane installation starts.

Transporte grúa de 39,8 m bajo gancho con traslación y sin lastre

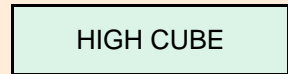
39,8 m under hook crane transport with travelling base and without base ballast

En camiones / In trucks

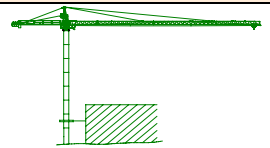


2 unidades / 2 units

En contenedores / In containers

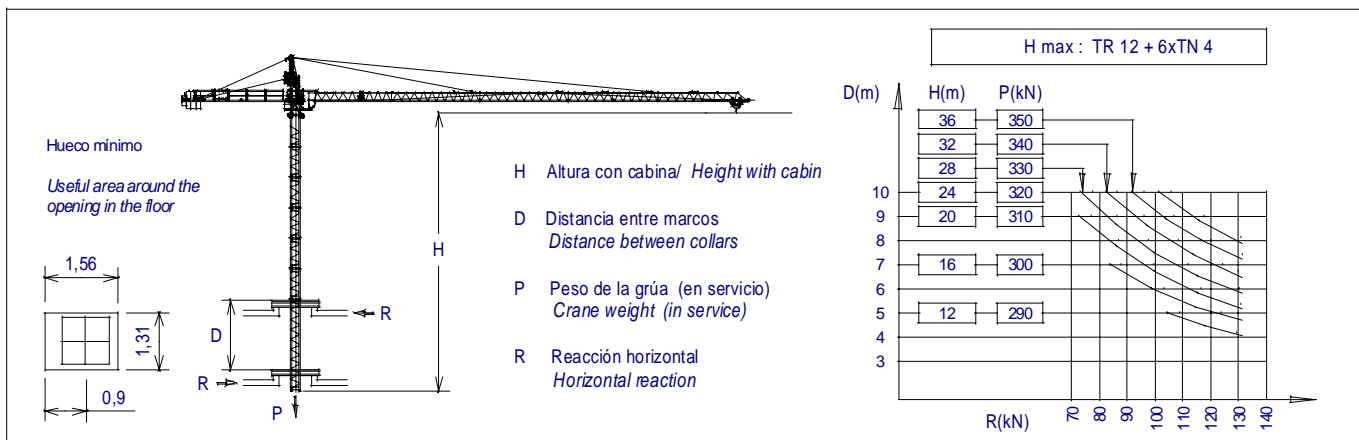


2 unidades / 2 units



Máximo número de torres TNS 4 a colocar por encima del último arriostamiento: 6

Maximum TNS 4 mast sections above the last tie-back: 6



**JASO EQUIPOS DE OBRAS Y CONSTRUCCIONES, S.L**  
 Ctra./Rd. Madrid - Irún Km. 415  
 20.213 IDIAZABAL (Gipuzkoa)  
 ESPAÑA / SPAIN  
 P.O. Box, 23 - 20.200 BEASAIN

Tel. +34 943 - 18 70 00  
 Fax. +34 943 - 18 70 20  
 E-mail: jaso@jaso.com  
 http://www.jaso.com

Fecha / Date: 22-01-07

Reservado el derecho a modificaciones sin previo aviso / Subject to modification, without previous warning

DELEGACION / DELEGATION