

GRUA TORRE TOWER CRANE

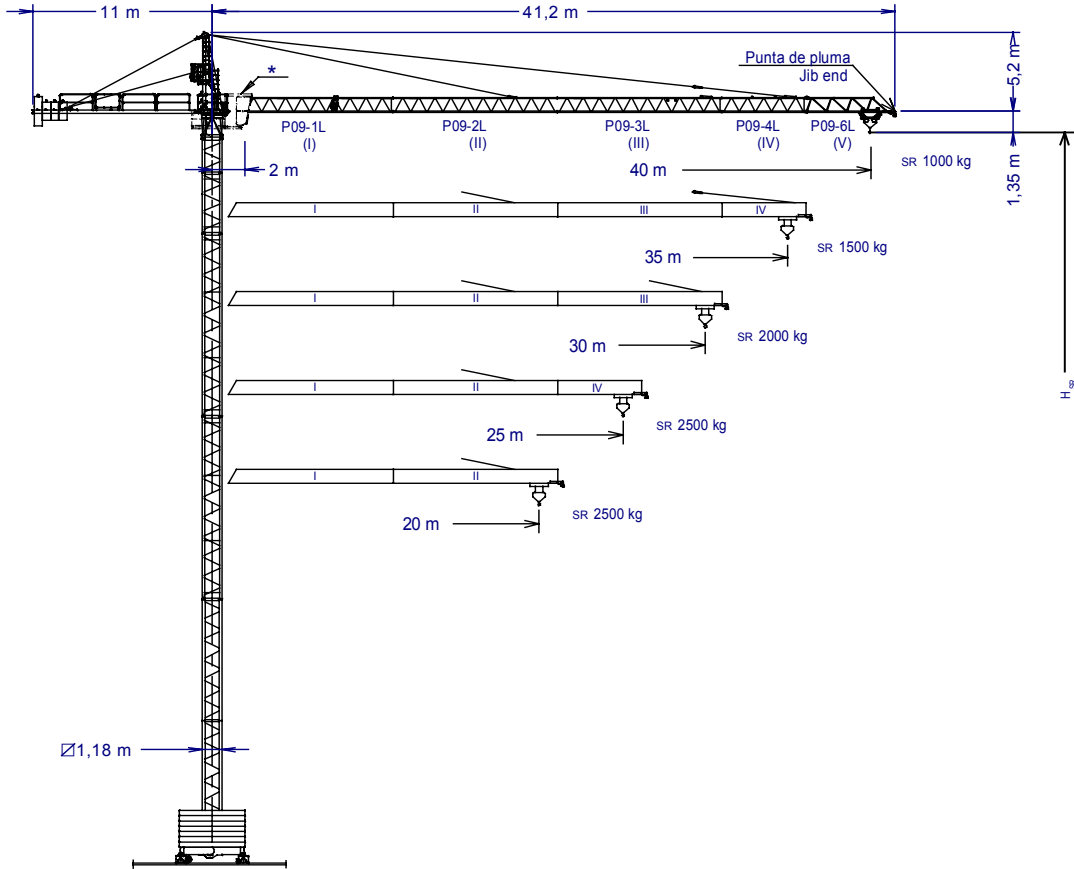
SERIE L

J4010

UNE 58-101-92
FEM 1001-87
Directivas de nivel de potencia acústica / Sound power level directives
84/534/CEE & 87/405/CEE
Directivas de máquinas / Machinery directives
89/392/CEE & 91/368/CEE

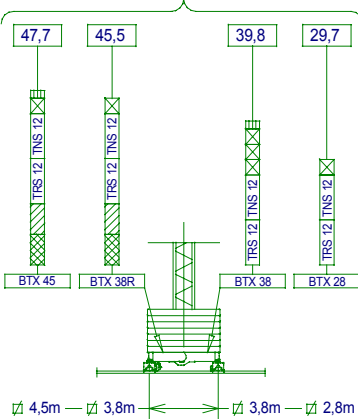
SISTEMA DE CALIDAD CERTIFICADO SEGUN
QUALITY ASSURANCE SYSTEM CERTIFIED ACCORDING TO

UNE-EN-ISO 9001

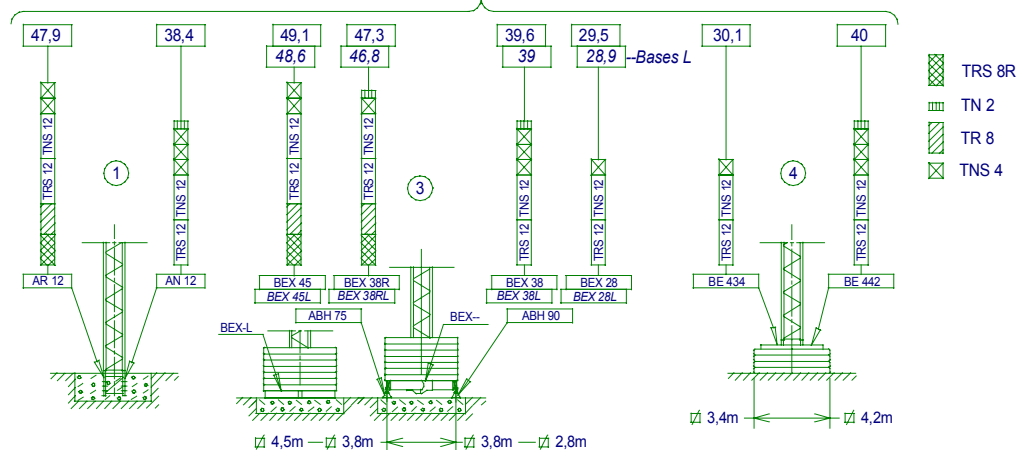


<p>*Cabina opcional *Optional cabin</p> <p>H_{SR} = Altura máxima bajo gancho sin arristrar (m). Maximum height under hook without fastening (m). Con cabina bajar H_{SR} 2m. Lower H_{SR} 2m with cabin.</p>	P09-1L.....	155.40.000	AN 12.....	146.21.000
	P09-2L.....	155.41.000	BTX 45/BEX 45.....	137.20.500
	P09-3L.....	155.42.000	BTX 38R/BEX 38R.....	137.20.000
	P09-4L.....	155.43.000	BTX 38/BEX 38.....	149.20.000
	P09-6L.....	154.44.500	BTX 28/BEX 28.....	149.20.500
	Punta de pluma/Jib end.....	155.45.000	BEX 45L.....	155.23.500
	TRS 12.....	155.31.000	BEX 38RL.....	155.23.800
	TNS 12.....	155.31.500	BEX 38L.....	155.23.000
	TRS 8R.....	155.30.500	BEX 28L.....	155.23.200
	TR 8.....	146.30.500	ABH 75.....	152.23.000
	TNS 4.....	155.32.000	ABH 90.....	146.23.000
	TN2.....	146.32.500	BE 442.....	146.24.000
	AR12.....	137.21.000	BE 434.....	146.24.600

(H_{SR}) TRASLACION / TRAVELLING



(H_{SR}) ESTACIONARIA / STATIONARY













JASO EQUIPOS DE OBRAS Y CONSTRUCCIONES, S.L.

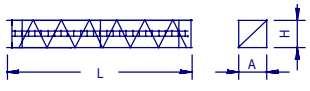
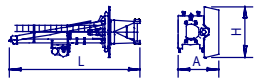
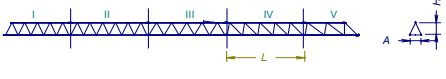
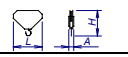


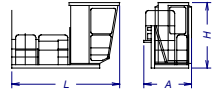
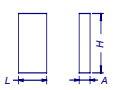
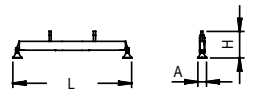
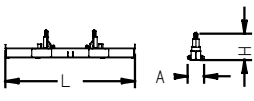
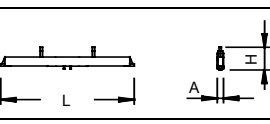
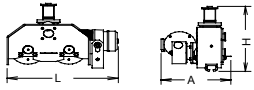
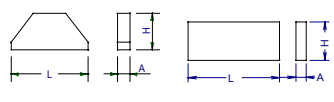
Fecha / Date: 26-05-06 - Reservado el derecho a modificaciones sin previo aviso / Subject to modification, without previous warning

b ₃ c SR1 (kg)		Cargas máximas / Maximum loads SR1 - 2000					2000 kg a ... (m)
PLUMA JIB	Alcance del gancho (m) / Hook reach (m)						
	40	35	30	25	20		
40 m	1000	1179	1417	1750	2000	22,22	
35 m	—	1500	1792	2000	2000	27,22	
30 m	—	—	2000	2000	2000	30	
25 m	—	—	—	2000	2000	25	
20 m	—	—	—	—	2000	20	

b ₃ c SR2 (kg)		Cargas máximas / Maximum loads SR2 - 2500					2500 kg a ... (m)
PLUMA JIB	Alcance del gancho (m) / Hook reach (m)						
	40	35	30	25	20		
40 m	1000	1179	1417	1750	2250	18,18	
35 m	—	1500	1792	2200	2500	22,27	
30 m	—	—	2000	2450	2500	24,55	
25 m	—	—	—	2500	2500	25	
20 m	—	—	—	—	2500	20	

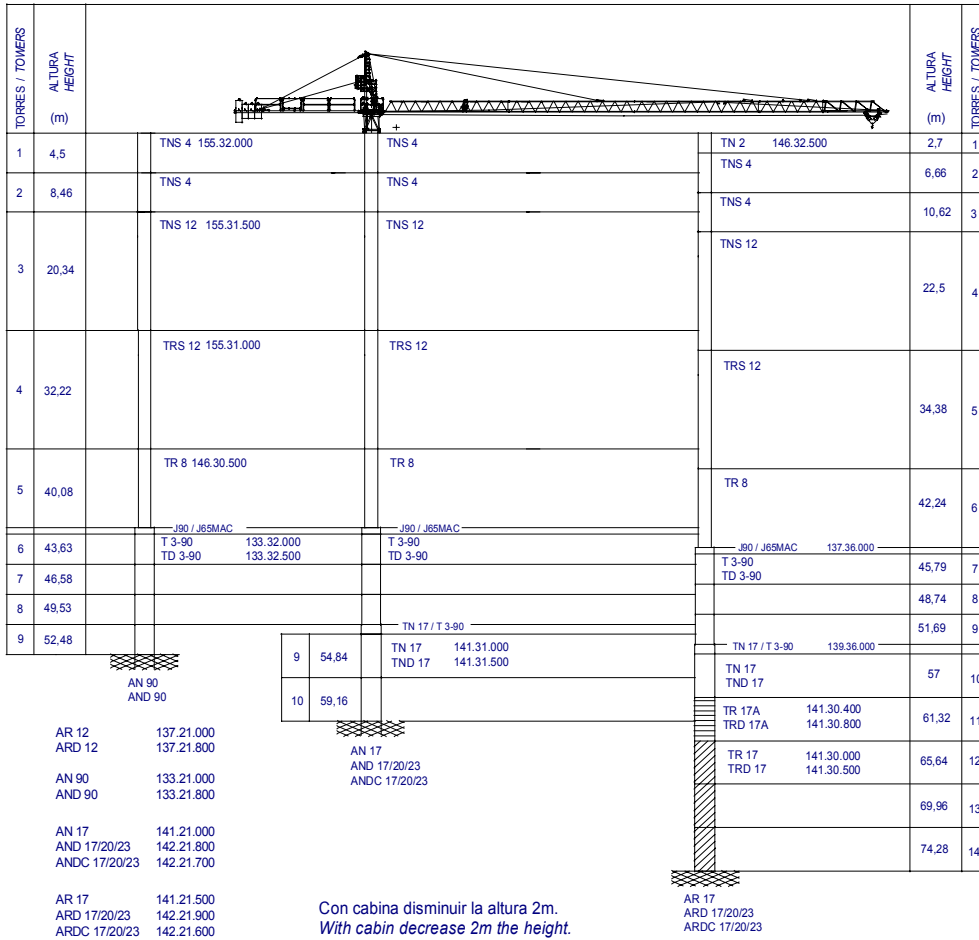
CARACTERÍSTICAS DE MECANISMOS MECHANISMS FEATURES		Mecanismos sin VF: Para Mechanisms without VF: For			480V 60Hz	Potencias y velocidades: 20% más Powers and speeds: 20% more			
*opcional *optional									
	EC1846 SR2	EC1856 SR1	*EC2566 SR2	*EC2580 SR1	*EC2566VF SR2	*EC2580VF SR1	2,8/3,8 / 4,5m TG825VF	OG608VF	TC360 *TC360VF
b _d t m/min	1,3 2,5 2,5 46 23 5	1,1 2 2 56 28 6	1,3 2,5 2,5 64 32 8	1,1 2 2 82 41 10	1,3 2,5 0..64 0..32	1,1 2 0..82 0..41	0...25 m/min	0...0,4 0,4...0,8 r/min sl/min	30/60 m/min *0...30 *30...60 m/min
kW	13,2		18,4			2 x 3	4	1,9 *1,8	
Máx. recorrido gancho Maximum hook course	SR 88 m 3 capas/layers 193 m 6 capas máx./ max. layers		SR 138 m 3 capas/layers 189 m 4 capas máx./ max. layers				400V 50Hz	Potencia necesaria ... Power required ... 25,1kW *30,2kW	
IMPORTANTE:	A medida que la altura bajo gancho aumenta, disminuirá la capacidad de carga. Consultar el capítulo de capacidad de carga (04.015.00) del apartado del mecanismo de elevación del Manual del Fabricante.			IMPORTANT:			When the height under hook increases, the hoisting load will decrease. Consult the chapter of load capacity (04.015.00) of the hoisting mechanism of the Manufacturer's Handbook.		



DENOMINACION / DENOMINATION			L (m)	A (m)	H (m)	P / W (kg)	
Torre Tower	TRS 8R – TR 8		8,07	1,19	1,19	2575-2515	
	TRS 12 – TNS 12		12,01	1,19	1,19	2840-2780	
	TNS 4		4,09	1,19	1,19	1055	
	TN 2		2,29	1,19	1,19	785	
Conjunto asiento pista, punta de torre, orientación y elevación <i>Slewing table assembly, tower head, slewing and hoisting mechanism</i>				6,97	1,65	2,42	3622
Tramo pluma Jib section	P09 1L (I)		10,13	1	1,15	650	
	P09 2L (II)		10,13	0,86	1,09	550	
	P09 3L (III)		10,15	0,86	1,09	565	
	P09 4L (IV)		5,26	0,86	1,09	250	
	P09 6L (V)		5,23	0,86	1,03	185	
Polipasto Hook assembly	SR		0,76	0,16	0,96	135	
Carro Crab	SR		0,10	1,33	0,73	110	
Contrapluma con plataformas <i>Counterjib with platforms</i>				9,95	1,4	0,4	815
Plataforma y cabina <i>Platform and cabin</i>				3,69	1,63	2,25	820
Contrapeso Counterweight	Grande / Big		1,08	0,50	2,02	2360	
	Pequeño / Small		1,08	0,50	1,30	1500	
Base grúa Testero largo Crane base Long carriage	Con apoyos Estacionaria III <i>With supports Stationary III</i>	BTX 28 BTX 38 BTX 38R BTX 45		4,70 6,11 6,11 7,01	0,64 0,64 0,64 0,64	1,53 1,53 1,57 1,57	1346 1576 1792 2065
	Sin apoyos Estacionaria III <i>Without supports Stationary III</i>	BTX 28L BTX 38L BTX 38RL BTX 45L		6,45 5,46 5,46 4,01	0,55 0,55 0,55 0,55	0,97 0,97 0,88 0,88	1320 1160 850 660
	Sin mecanismo trasl <i>Without travelling mechanism</i>	BEX 28 BEX 38 BEX 38R BEX 45		4,15 5,56 5,56 6,55	0,3 0,3 0,3 0,3	1,27 1,27 1,40 1,41	1160 1390 1590 1863
	Mecanismo traslación grúa <i>Crane travelling mechanism</i>			0,96	0,56	0,66	293
Lastre Ballast	Est. III-Trasl. <i>Stationary III-Travelling</i>	Ø2,8m Ø3,8m - Ø4,5m		3,00 4,00	0,44 0,34	1,30 1,30	3700 4100
	Est. IV/Stationary IV	BE 442		2,09	0,34	2,10	3450
		BE 434		3,40	0,34	1,69	4300

LASTRES INFERIORES / LOWER BALLASTS				Para alturas intermedias tomar el lastre correspondiente a la altura superior <i>For intermediate heights take the ballast corresponding to the higher height</i>							
Altura bajo gancho (m) / Height under hook (m)				14	18	22	30	40	46	49	
Número de piedras de lastre Grúa sin cabina <i>Number of ballast blocks Crane without cabin</i>	Est. III <i>Stationary III Trasl. Travelling</i>	Piedras:4100 kg <i>Blocks:4100 kg</i>	BEX 45 / BTX 45	6		8	10	12	14		
			BEX 45L	8		10	12	14			
			BEX 38R / BTX 38R	6	8	10	12	14	----		
			BEX 38 / BTX 38	6	8	10	12	----			
			BEX 38RL	8		10	12	14			
			BEX 38L	8		10	12	----			
	Est. IV <i>Stationary IV</i>	Piedras:3700 kg <i>Blocks:3700 kg</i>	BEX 28 / BTX 28 BEX 28L	8	10	12	----				
			Piedras:4300 kg <i>Blocks:4300 kg</i>	BE 434	hasta 20m 6 piedras <i>until 20m 6 blocks</i>			hasta 30,1m 8 piedras <i>until 30,1m 8 blocks</i>			
		Piedras:3450 kg <i>Blocks: 3450 kg</i>	BE 442	hasta 27,3m 8 piedras <i>until 27,3m 8 blocks</i>		hasta 31,6m 12 piedras <i>until 31,6m 12 blocks</i>		hasta 40m 16 piedras <i>until 40m 16 blocks</i>			





Las configuraciones de torre representadas son recomendaciones de montaje que pueden ser utilizadas en cualquier instalación. Cada tramo de torre, en la posición indicada, puede asimismo ser utilizado como elemento inferior de torre en grúa autoestable estándar con su correspondiente altura bajo gancho.

Configuraciones de torre para mayores alturas bajo gancho o con diferentes tramos de torre no representadas aquí, pueden ser también posibles aunque deben ser verificadas y confirmadas por escrito por nuestro departamento técnico en cada caso individual y antes de que empiece la instalación de la grúa.

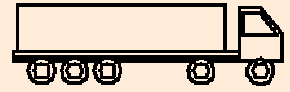
The represented tower configurations are assembly recommendations that can be used in any installation. Each tower section in its indicated position can also be used as the lower element of the mast tower in standard freestanding crane with its corresponding height under hook.

Tower configurations not shown here, with greater heights under hook or with different tower sections, are also possible but must be checked and confirmed in writing by our technical department in every individual case and before crane installation starts.

Transporte grúa de 39,8 m bajo gancho con traslación y sin lastre

39,8 under hook crane transport with travelling base and without base ballast

En camiones / In trucks

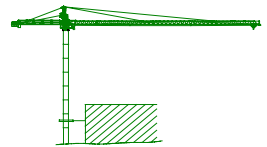


2 unidades / 2 units

En contenedores / In containers

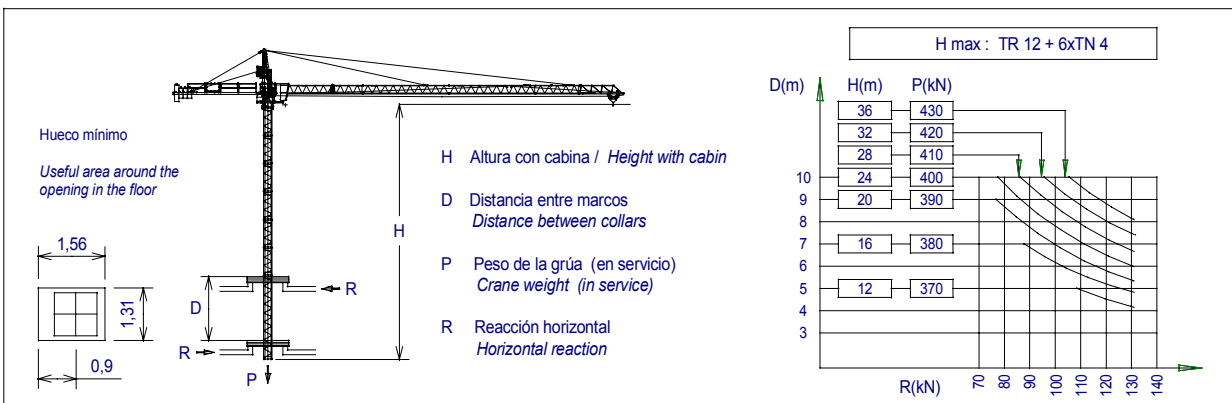
HIGH CUBE

2 unidades / 2 units



Máximo número de torres TNS 4 a colocar por encima del último arriostamiento: 6

Maximum TNS 4 mast sections above the last tie-back: 6



JASO EQUIPOS DE OBRAS Y CONSTRUCCIONES. S.L

Ctra./Rd. Madrid - Irún Km. 415
 20.213 IDIAZABAL (Gipuzkoa)
 ESPAÑA / SPAIN
 P.O. Box, 23 - 20.200 BEASAIN

Tel. +34 943 - 18 70 00
 Fax. +34 943 - 18 70 20
 E-mail: jaso@jaso.com
 http://www.jaso.com

Fecha / Date: 26-05-06

Reservado el derecho a modificaciones sin previo aviso / Subject to modification, without previous warning

DELEGACION / DELEGATION