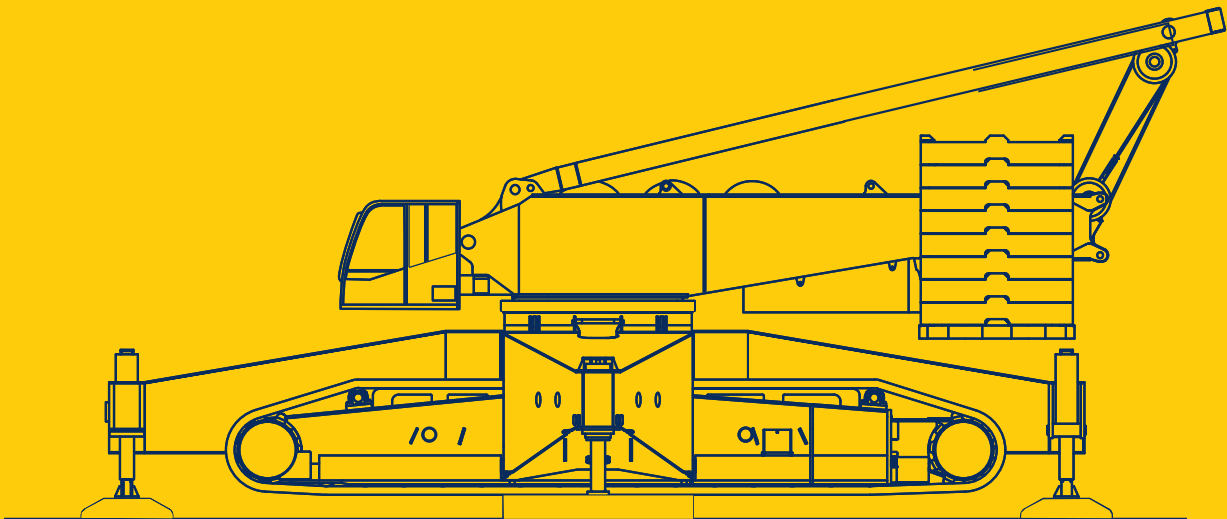




EUROGRUAS

600t

DEMAG CC 2800 -1 NT

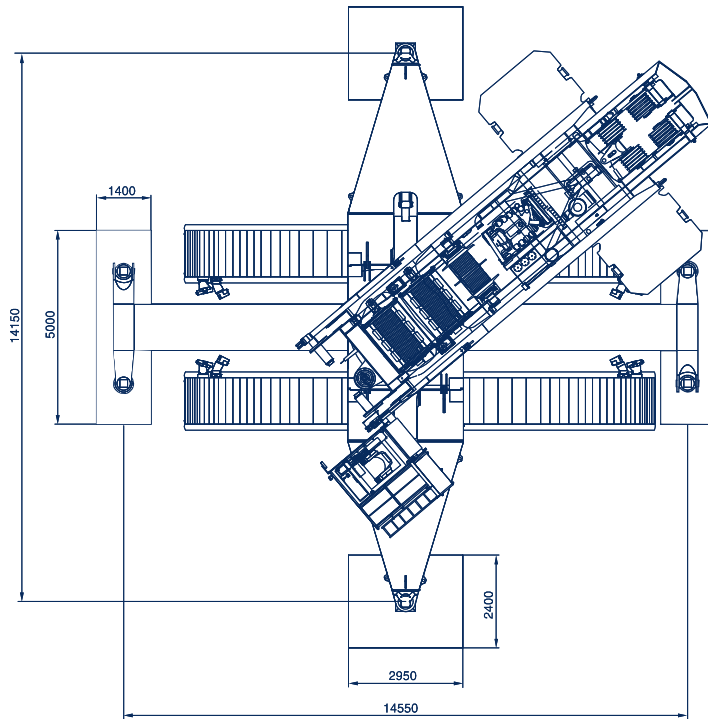
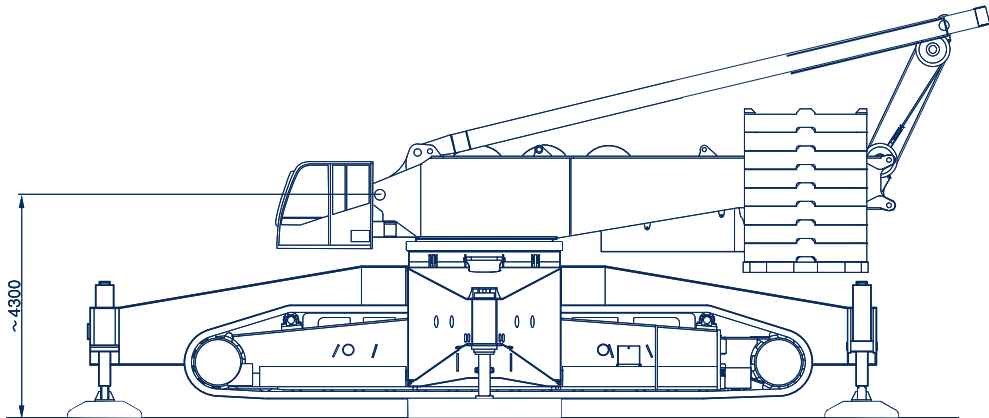


DEMAG CC 2800 - 1 NT



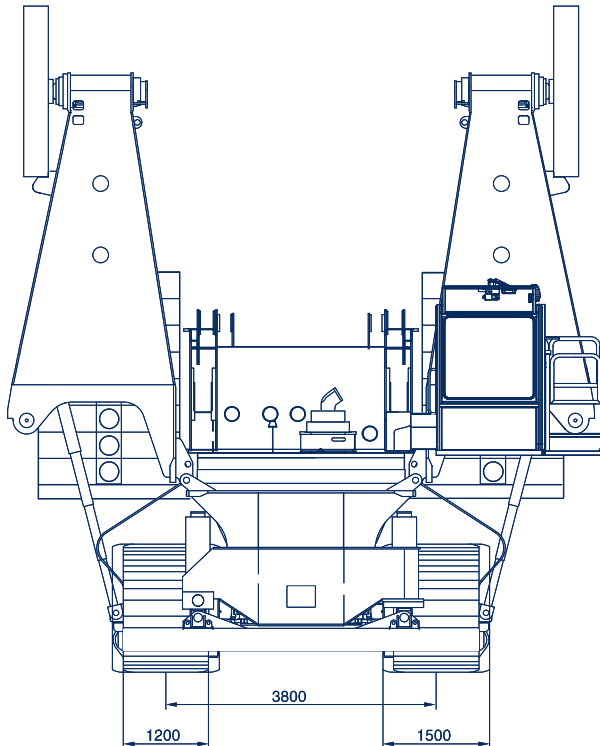
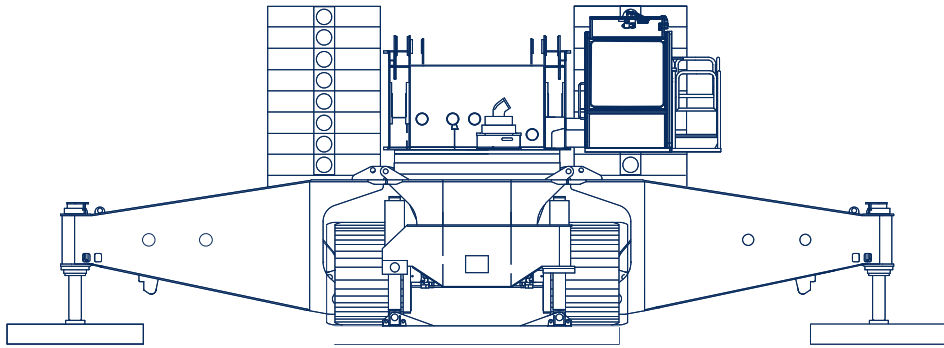
DIMENSIONES / DIMENSIONS

600t



DEMAG CC 2800 - 1 NT

DIMENSIONES / DIMENSIONS

600t

DEMAG CC 2800 - 1 NT



CAPACIDADES DE CARGA CON PLUMA PRINCIPAL SH / LIFTING CAPACITIES MAIN BOOM SH

600t

180 t		10 m x 10 m		0 - 360°		DIN / ISO	
Radio Radius m	24 m	Radio Radius m	30 m	Radio Radius m	36 m	Radio Radius m	42 m
6	407,0*	7	363,0*	7	360,0*	8	323,0*
7	366,0*	8	330,0*	8	326,0*	9	295,0*
8	333,0*	9	302,0*	9	299,0*	10	272,0*
9	305,0*	10	278,0*	10	275,0*	12	234,0*
10	281,0*	12	240,0*	12	237,0*	14	199,0*
12	243,0*	14	204,0*	14	201,0*	16	171,0*
14	207,0*	16	176,0*	16	173,0*	18	149,0*
16	179,0*	18	154,0*	18	152,0*	20	130,0*
18	157,0*	20	133,0*	20	132,0*	22	112,0*
20	136,0*	22	116,0*	22	114,0*	24	98,5*
22	118,0*	24	102,0*	24	100,0*	26	87,0*
23	111,0*	26	91,5*	26	89,5*	28	78,0*
		28	82,5*	28	80,5*	30	70,5*
				30	72,5*	34	58,5*
				33	63,5*	38	49,9*
						39	48,2*

Radio Radius m	48 m	Radio Radius m	54 m	Radio Radius m	60 m	Radio Radius m	66 m
8	321,0*	9	291,0*	9	289,0*	10	264,0*
9	293,0*	10	267,0*	10	265,0*	12	226,0*
10	269,0*	12	229,0*	12	227,0*	14	192,0*
12	231,0*	14	195,0*	14	194,0*	16	164,0*
14	197,0*	16	167,0*	16	166,0*	18	143,0*
16	169,0*	18	146,0*	18	144,0*	20	125,0*
18	147,0*	20	127,0*	20	126,0*	22	107,0*
20	128,0*	22	109,0*	22	108,0*	24	93,5*
22	110,0*	24	95,5*	24	94,5*	26	82,5*
24	97,0*	26	84,5*	26	83,5*	28	73,0*
26	85,5*	28	75,0*	28	74,0*	30	65,0*
28	76,5*	30	67,5*	30	66,0*	34	52,5*
30	68,5*	34	55,0*	34	54,0*	38	43,6*
34	56,5*	38	46,2*	38	44,8*	42	43,1*
38	47,8*	42	39,2*	42	37,6*	46	30,0*
42	41,0*	46	33,6*	46	31,6*	50	25,2*
44	38,2*	49	30,1*	50	26,9*	54	21,3*
				54	23,2*	58	18,1*
						59	17,5*

Radio Radius m	72 m	Radio Radius m	78 m	Radio Radius m	84 m
10	262,0*	11	235,0*	11	212,0*
12	223,0*	12	214,0*	12	205,0*
14	188,0*	14	181,0*	14	173,0*
16	161,0*	16	155,0*	16	149,0*
18	141,0*	18	136,0*	18	130,0*
20	124,0*	20	120,0*	20	115,0*
22	107,0*	22	106,0*	22	102,0*
24	93,0*	24	92,0*	24	90,5*
26	81,5*	26	80,5*	26	79,0*
28	72,0*	28	71,0*	28	69,5*
30	64,0*	30	63,0*	30	61,5*
34	51,5*	34	50,5*	34	49,2*
38	42,4*	38	41,2*	38	39,1*
42	34,7*	42	33,4*	42	31,3*
46	28,5*	46	27,2*	46	25,1*
50	23,6*	50	22,2*	50	20,0*
54	19,5*	54	18,1*	54	15,9*
58	16,2*	58	14,6*	58	12,4*
62	13,5*	62	11,8*	62	9,5*
65	11,8*	66	9,4*	64	8,2*
		69	8,0*	66	7,0*
		70	7,5*	70	5,0*

(*) Gancho doble requerido / required double hook

DEMAG CC 2800 - 1 NT



EUROGRUAS

CAPACIDADES DE CARGA CON PLUMA PRINCIPAL SH/LH / LIFTING CAPACITIES MAIN BOOM SH/LH

600t

180 t		10 m x 10 m		0 - 360°		DIN / ISO	
Radio Radius m	66 m	Radio Radius m	72 m	Radio Radius m	78 m	Radio Radius m	84 m
9	294,0*	10	268,0*	10	202,0*	11	169,0*
10	270,0*	12	227,0*	12	202,0*	12	169,0*
12	232,0*	14	192,0*	14	178,0*	14	150,0*
14	199,0*	16	166,0*	16	158,0*	16	133,0
16	171,0*	18	145,0	18	140,0	18	119,0
18	149,0	20	129,0	20	125,0	20	107,0
20	131,0	22	113,0	22	112,0	22	96,0
22	114,0	24	99,5	24	99,0	24	87,0
24	100,0	26	88,0	26	88,0	26	80,0
26	88,5	28	78,5	28	78,5	28	73,0
28	79,0	30	71,0	30	70,5	30	67,5
30	71,0	34	58,5	34	58,0	34	57,0
34	58,5	38	49,0	38	48,6	38	47,7
38	49,4	42	41,7	42	41,2	42	40,3
42	42,1	46	35,7	46	35,3	46	34,2
46	36,3	50	30,8	50	30,2	50	29,0
50	31,5	54	26,6	54	25,9	54	24,7
54	27,3	58	23,0	58	22,3	58	21,1
58	23,9	62	20,1	62	19,3	62	18,1
59	23,1	64	18,8	66	16,7	66	15,4
				70	14,5	70	13,2
						74	11,3
						75	8,8

Radio Radius m	90 m	Radio Radius m	96 m	Radio Radius m	102 m
12	154,0*	13	108,0	13	108,0
14	154,0*	14	108,0	14	108,0
16	142,0*	16	103,0	16	103,0
18	131,0*	18	98,5	18	98,5
20	117,0	20	93,5	20	93,5
22	105,0	22	89,0	22	89,0
24	95,5	24	84,5	24	84,5
26	86,5	26	80,0	26	80,0
28	77,0	28	74,5	28	74,5
30	69,0	30	68,0	30	68,0
34	56,5	34	55,5	34	55,5
38	47,1	38	46,1	38	46,1
42	39,7	42	38,6	42	38,6
46	33,5	46	32,2	46	32,2
50	28,3	50	26,9	50	26,9
54	24,0	54	22,6	54	22,6
58	20,3	58	28,9	58	18,9
62	17,2	62	25,7	62	15,7
66	14,6	66	23,0	66	13,0
70	12,3	70	10,6	70	10,6
74	10,3	74	8,6	74	8,6
78	8,6	78	6,8	78	6,8
80	7,8	82	5,2	82	5,2
		85	4,1	85	4,1

(*) Gancho doble requerido / required double hook

DEMAG CC 2800 - 1 NT



CAPACIDADES DE PLUMA PRINCIPAL CON SUPERLIFT SSL / LIFTING CAPACITIES MAIN BOOM AND SSL

600t

180 t		10 m x 10 m		SL-Radius 15 m		0 - 360°		DIN / ISO							
Radio Radius	72 m Pluma Principal / Main Boom							Radio Radius	78 m Pluma Principal / Main Boom						
	0	50	100	150	200	250	300		0	50	100	150	200	250	300
10	266.0*	303.0*	341.0#	372.0#	372.0#	(373.0#)	(373.0#)	12	226.0*	258.0*	291.0*	315.0#	(315.0#)	(316.0#)	(316.0#)
12	227.0*	260.0*	293.0*	325.0*	358.0*	(373.0*)	(373.0#)	14	194.0*	225.0*	254.0*	283.0*	312.0#	(316.0#)	(316.0#)
14	198.0*	227.0*	256.0*	285.0*	314.0*	(342.0*)	(371.0#)	16	167.0*	199.0*	225.0*	251.0*	277.0*	303.0*	(316.0#)
16	170.0*	200.0*	226.0*	252.0*	278.0*	304.0*	(330.0*)	18	146.0*	177.0*	201.0*	224.0*	248.0*	272.0*	(295.0*)
18	147.0*	179.0*	202.0*	226.0*	249.0*	273.0*	(297.0*)	20	128.0*	159.0*	181.0*	203.0*	224.0*	246.0*	(267.0*)
20	130.0*	161.0*	182.0*	204.0*	226.0*	247.0*	(269.0*)	22	114.0*	144.0*	164.0*	184.0*	204.0*	224.0*	244.0*
22	115.0*	145.0*	166.0*	186.0*	205.0*	225.0*	245.0*	24	100.0*	129.0*	150.0*	168.0*	187.0*	205.0*	224.0*
24	101.0*	130.0*	151.0*	170.0*	188.0*	207.0*	225.0*	26	88.0*	117.0*	138.0*	155.0*	172.0*	189.0*	206.0*
26	89.0*	118.0*	139.0*	156.0*	173.0*	191.0*	208.0*	28	78.0*	106.0*	127.0*	143.0*	159.0*	175.0*	191.0*
28	79.0*	107.0*	128.0*	144.0*	160.0*	177.0*	193.0*	30	70.0*	97.0*	117.0*	133.0*	148.0*	163.0*	178.0*
30	70.5*	98.5*	119.0*	134.0*	149.0*	164.0*	179.0*	34	56.5*	81.5*	101.0*	115.0*	129.0*	142.0*	156.0*
34	57.5*	82.5*	103.0*	117.0*	130.0*	144.0*	157.0*	38	46.6*	68.5*	87.5*	101.0*	119.0*	125.0*	138.0*
38	47.6*	69.5*	89.0*	102.0*	115.0*	127.0*	139.0*	42	38.4*	58.5*	76.5*	89.5*	101.0*	112.0*	123.0*
42	39.7*	59.5*	77.5*	91.0*	102.0*	113.0*	124.0*	46	31.8*	50.0*	67.0*	80.0*	90.5*	100.0*	111.0*
46	33.1*	51.5*	68.5*	81.5*	92.0*	102.0*	112.0*	50	26.5*	43.7*	59.5*	72.0*	81.5*	91.0*	100.0*
50	27.8*	44.9*	61.0*	73.5*	83.0*	92.5*	102.0*	54	22.1*	37.9*	53.0*	65.0*	74.0*	82.5*	91.5*
54	23.5*	39.3*	54.0*	66.5*	75.5*	84.0*	93.0*	58	18.4*	33.0*	47.4*	59.0*	67.5*	75.5*	84.0*
58	19.9*	34.6*	48.7*	60.5*	69.0*	77.0*	85.5*	62	15.3*	28.9*	42.6*	53.5*	61.5*	69.5*	77.0*
62	17.0*	30.6*	44.0*	55.0*	63.5*	71.0*	79.0*	66	12.8*	25.5*	38.2*	49.0*	57.0*	64.0*	71.5*
66								70	10.7*	22.7*	34.6*	45.0*	52.5*	59.5*	65.5*

Radio Radius	84 m Pluma Principal / Main Boom							Radio Radius	90 m Pluma Principal / Main Boom						
	0	50	100	150	200	250	300		0	50	100	150	200	250	300
12	219.0*	256.0*	280.0#	280.0#	(281.0#)	(281.0#)	(281.0#)	12	210.0*	234.0*	235.0*	(236.0*)	(237.0*)	(238.0*)	(238.0*)
14	186.0*	223.0*	252.0*	280.0#	281.0#	(281.0#)	(281.0#)	14	179.0*	221.0*	235.0*	236.0*	(237.0*)	(238.0*)	(238.0*)
16	161.0*	196.0*	222.0*	248.0*	274.0*	(281.0#)	(281.0#)	16	155.0*	195.0*	221.0*	236.0*	237.0*	(238.0*)	(238.0*)
18	141.0*	175.0*	198.0*	222.0*	245.0*	269.0*	(281.0#)	18	136.0*	173.0*	197.0*	221.0*	237.0*	(238.0*)	(238.0*)
20	125.0*	157.0*	189.0*	200.0*	222.0*	243.0*	(265.0*)	20	120.0*	156.0*	177.0*	199.0*	220.0*	237.0*	(237.0*)
22	111.0*	142.0*	162.0*	182.0*	202.0*	221.0*	241.0*	22	107.0*	140.0*	160.0*	180.0*	200.0*	220.0*	(233.0*)
24	99.0*	127.0*	148.0*	166.0*	184.0*	203.0*	221.0*	24	96.5*	126.0*	146.0*	165.0*	183.0*	201.0*	220.0*
26	86.5*	115.0*	135.0*	152.0*	170.0*	187.0*	204.0*	26	86.0*	113.0*	134.0*	151.0*	169.0*	185.0*	203.0*
28	76.5*	104.0*	124.0*	141.0*	157.0*	173.0*	189.0*	28	75.5*	103.0*	123.0*	139.0*	155.0*	171.0*	188.0*
30	68.0*	95.0*	115.0*	130.0*	145.0*	160.0*	176.0*	30	67.0*	94.0*	114.0*	129.0*	144.0*	159.0*	174.0*
34	55.0*	80.0*	99.5*	113.0*	126.0*	140.0*	153.0*	34	54.0*	78.5*	98.0*	111.0*	125.0*	138.0*	152.0*
38	44.7*	67.0*	85.5*	99.0*	111.0*	123.0*	135.0*	38	43.6*	66.0*	84.0*	97.5*	110.0*	122.0*	134.0*
42	36.4*	56.5*	74.0*	87.5*	98.5*	109.0*	120.0*	42	35.2*	55.5*	73.0*	86.0*	97.0*	108.0*	119.0*
46	29.7*	48.6*	65.0*	77.5*	88.0*	98.0*	108.0*	46	28.5*	47.5*	63.5*	76.5*	86.5*	97.0*	107.0*
50	24.3*	41.5*	57.0*	69.5*	79.0*	88.5*	98.0*	50	23.1*	40.3*	56.0*	68.0*	77.5*	87.0*	96.5*
54	19.8*	35.7*	50.5*	62.5*	71.5*	80.0*	89.0*	54	18.6*	34.4*	49.5*	61.0*	70.0*	79.0*	84.5*
58	16.1*	30.8*	45.3*	56.5*	65.0*	73.0*	81.5*	58	14.8*	29.4*	43.9*	55.0*	63.5*	71.5*	80.0*
62	13.0*	26.6*	40.2*	51.0*	59.0*	67.0*	74.5*	62	11.6*	25.5*	38.9*	49.8*	57.5*	65.5*	73.0*
66	10.4*	23.1*	35.8*	46.5*	54.0*	61.5*	69.0*	66	8.9*	21.7*	34.4*	45.0*	52.5*	60.0*	67.0*
70	8.2*	20.1*	32.1*	42.4*	50.0*	57.0*	63.5*	70	6.6*	18.6*	30.5*	40.8*	48.4*	55.0*	62.0*
74	6.4*	17.6*	28.9*	38.8*	46.3*	52.5*	59.0*	73	5.2*	16.6*	28.0*	38.0*	45.5*	52.0*	58.5*
78								74		16.0*	27.2*	37.1*	44.5*	51.0*	57.5*
								78		13.7*	24.3*	33.9*	41.1*	47.4*	53.5*

(*) Gancho doble requerido / Required double hook




(.) No levantar el contrapeso del Superlift / Don't lift superlift counterweight

(#) Paso del cable no hasta el suelo / Don't leave the rope to the ground

DEMAG CC 2800 - 1 NT

CAPACIDADES DE PLUMA PRINCIPAL CON SUPERLIFT SSL / LIFTING CAPACITIES MAIN BOOM AND SSL

600t

180 t 		 10 m x 10 m		SL-Radius 15 m		0 - 360°		DIN / ISO	
Radio Radius	96 m Pluma Principal / Main Boom								
	0 t	50 t	100 t	150 t	200 t	250 t	300 t	SL 	
12	202,0*	204,0*	205,0*	(206,0*)	(207,0*)	(208,0*)	(208,0*)		
14	172,0*	204,0*	205,0*	(206,0*)	(207,0*)	(208,0*)	(208,0*)		
16	149,0*	193,0*	205,0*	206,0*	(207,0*)	(208,0*)	(208,0*)		
18	131,0*	172,0*	195,0*	206,0*	207,0*	(208,0*)	(208,0*)		
20	116,0	154,0*	175,0*	197,0*	207,0*	(208,0*)	(208,0*)		
22	103,0	139,0*	159,0*	179,0*	198,0*	205,0*	(205,0*)		
24	93,0	124,0	144,0*	163,0*	181,0*	200,0*	(201,0*)		
26	84,0	112,0	132,0*	149,0*	167,0*	184,0*	197,0*		
28	74,5	101,0	121,0	138,0*	154,0*	170,0*	186,0*		
30	66,0	92,5	112,0	127,0*	142,0*	157,0*	173,0*		
34	53,0	77,0	96,5	110,0	123,0	137,0*	150,0*		
38	42,2	64,5	82,5	96,0	108,0	120,0	132,0*		
42	33,8	54,5	71,5	84,5	95,5	106,0	117,0		
46	27,1	46,0	62,0	74,5	85,0	95,0	105,0		
50	21,6	38,9	54,5	66,5	76,0	85,5	95,0		
54	17,1	32,9	47,9	59,5	68,0	77,0	86,0		
58	13,3	27,9	42,3	53,5	61,5	70,0	78,0		
62	10,0	23,6	37,2	48,1	56,0	63,5	71,5		
66	7,3	20,0	32,7	43,2	50,5	58,0	65,5		
69	5,5	17,6	29,8	40,1	47,6	54,5	61,5		
70		16,8	28,8	39,0	46,5	43,0	60,0		
74		14,1	25,4	35,2	42,5	49,1	55,5		
78		11,8	22,4	31,9	39,0	45,3	51,5		
82		9,8	19,8	29,0	35,9	41,9	47,8		

(*) Gancho doble requerido / Required double hook

(.) No levantar el contrapeso del Superlift / Don't lift superlift counterweight

(#) Paso del cable no hasta el suelo / Don't leave the rope to the ground



DEMAG CC 2800 - 1 NT

CAPACIDADES DE PLUMA PRINCIPAL CON SUPERLIFT SSL/LSL / LIFTING CAPACITIES MAIN BOOM WITH SUPERLIFT SSL/LSL

180 t		10 m x 10 m		SL-Radius 15 m		0 - 360°		DIN / ISO									
Radio Radius	90 m Pluma Principal / Main Boom								Radio Radius	96 m Pluma Principal / Main Boom							
	0	50	100	150	200	250	300			0	50	100	150	200	250	300	
t	t	t	t	t	t	t	t	t	t	t	t	t	t	t	t		
12	214,0*	239,0*	240,0*	(243,0*)	(245,0*)	(245,0*)	(248,0*)	12	207,0*	207,0*	208,0*	(210,0*)	(210,0*)	(212,0*)	(215,0*)		
14	183,0*	228,0*	240,0*	243,0*	(245,0*)	(245,0*)	(248,0*)	14	177,0*	206,0*	207,0*	(209,0*)	(209,0*)	(212,0*)	(214,0*)		
16	159,0*	202,0*	228,0*	243,0*	245,0*	(245,0*)	(248,0*)	16	154,0*	201,0*	206,0*	209,0*	(209,0*)	(211,0*)	(213,0*)		
18	140,0*	181,0*	204,0*	228,0*	245,0*	(245,0*)	(248,0*)	18	136,0*	180,0*	203,0*	208,0*	209,0	(210,0*)	(212,0*)		
20	124,0*	163,0*	184,0*	206,0*	227,0*	244,0*	(246,0*)	20	121,0	162,0*	183,0*	205,0*	209,0	(209,0*)	(211,0*)		
22	112,0	148,0*	168,0*	188,0*	207,0*	227,0*	(241,0*)	22	108,0	147,0*	167,0*	187,0*	206,0	206,0*	(209,0*)		
24	101,0	133,0*	153,0*	172,0*	190,0*	209,0*	227,0*	24	89,0	132,0*	153,0*	171,0*	189,0	205,0*	(205,0*)		
26	91,5	121,0	141,0*	158,0*	175,0*	193,0*	210,0*	26	89,0	120,0	140,0*	157,0*	175,0	192,0*	202,0*		
28	82,0	110,0	130,0*	146,0*	163,0*	179,0*	195,0*	28	81,5	109,0	129,0*	146,0*	162,0	178,0*	194,0*		
30	73,5	101,0	121,0	136,0*	151,0*	166,0*	181,0*	30	73,5	100,0	120,0	135,0*	150,0	165,0*	181,0*		
36	55,0	79,0	98,0	111,0	124,0	137,0*	150,0*	36	54,5	78,5	97,5	111,0	123,0	136,0*	149,0*		
42	42,3	62,0	80,0	93,0	104,0	115,0	126,0*	42	41,9	61,5	79,0	92,0	103,0	114,0	125,0*		
48	32,9	50,0	66,5	79,0	89,0	99,0	108,0	48	32,3	49,8	66,0	78,5	88,0	98,0	108,0		
54	25,5	41,2	56,0	68,0	77,0	85,5	94,5	54	24,9	40,7	55,5	67,0	76,0	84,5	93,5		
60	20,0	34,1	47,7	59,0	67,0	75,0	83,0	60	19,3	33,4	47,1	58,0	66,5	74,5	82,5		
66	15,5	28,2	40,8	51,0	59,0	66,5	73,5	66	14,7	27,5	40,2	50,5	58,0	65,5	72,5		
72	11,9	23,5	35,1	45,2	52,5	59,0	66,0	72	11,1	22,7	34,3	44,3	51,5	58,0	65,0		
78	9,0	19,7	30,3	39,8	47,0	53,0	59,0	78	8,2	18,8	29,4	38,9	46,0	52,0	58,0		
								82	6,5	16,6	26,7	35,8	42,7	48,7	54,5		

Radio Radius	102 m Pluma Principal / Main Boom						
	0	50	100	150	200	250	300
	t	t	t	t	t	t	t
14	147,0*	147,0*	147,0*	(149,0*)	(149,0)	(151,0*)	(153,0*)
16	143,0*	144,0*	145,0*	(147,0*)		(148,0*)	(150,0*)
18	128,0*	140,0*	142,0*	(144,0*)	*	(146,0*)	(147,0*)
20	114,0*	137,0*	139,0*	142,0*	(147,0*)	(143,0*)	(145,0*)
22	102,0	134,0*	137,0*	139,0*	(144,0*)	(140,0*)	(142,0*)
24	92,5	130,0*	134,0*	137,0*	(142,0*)	(138,0*)	(139,0*)
26	84,0	118,0*	131,0*	134,0*	(139,0*)	(135,0*)	(136,0*)
28	76,5	107,0	127,0*	131,0*	(137,0*)	(132,0*)	(133,0*)
30	70,0	98,5	118,0*	128,0*	134,0*	(129,0*)	(130,0*)
34	53,5	77,0	95,5	109,0	132,0*	120,0*	(121,0*)
38	40,4	60,0	77,5	90,0	129,0*	112,0*	114,0*
42	30,7	48,5	64,0	76,5	120,0*	96,0	105,0
48	23,3	39,1	53,5	65,0	101,0	82,5	91,5
54	17,6	31,7	45,5	56,0	86,0	72,0	80,0
60	13,0	25,7	38,4	48,7	74,0	63,5	70,5
66	9,3	20,9	32,5	42,3	64,5	56,0	63,0
72	6,3	16,9	27,5	36,8	56,0	50,0	56,0
78	4,1	14,1	24,1	33,0	49,6	45,7	51,5
84		13,6	23,4	32,3	43,8	44,9	50,5
86		10,8	19,9	28,4	39,8	40,2	45,6
92		9,2	17,9	26,1	39,0	37,5	42,7
96							

Radio Radius	108 m Pluma Principal / Main Boom						
	0	50	100	150	200	250	300
	t	t	t	t	t	t	t
14	129,0*	129,0*	(129,0*)	(130,0*)	(130,0*)	(132,0*)	(134,0*)
16	126,0*	127,0*	127,0*	(129,0*)	(129,0*)	(130,0*)	(132,0*)
18	124,0*	125,0*	126,0*	(128,0*)	(128,0*)	(129,0*)	(131,0*)
20	111,0*	124,0*	125,0*	(126,0*)	(126,0*)	(127,0*)	(129,0*)
22	99,5*	122,0*	123,0*	125,0*	(125,0*)	(126,0*)	(127,0*)
24	90,0	120,0*	122,0*	123,0*	(123,0*)	(124,0*)	(126,0*)
26	82,0	116,0*	120,0*	122,0*	(122,0*)	(123,0*)	(124,0*)
28	74,5	106,0*	119,0*	120,0*	120,0*	(121,0*)	(122,0*)
30	68,0	98,0*	117,0*	119,0*	120,0*	(120,0*)	(120,0*)
36	53,0	76,5	95,0*	108,0*	113,0*	113,0*	(115,0*)
42	40,0	60,0	77,0	89,5	100,0*	108,0*	108,0
48	30,4	48,2	63,5	75,5	85,5	95,5*	101,0
54	22,8	38,7	53,0	65,4	73,5	82,0	91,0
60	17,2	31,3	44,9	55,5	63,5	71,5	79,5
66	12,5	25,2	38,0	48,1	55,5	62,5	70,0
72	8,8	20,4	32,0	41,7	49,0	55,5	62,0
78	5,7	16,3	27,0	36,2	43,2	49,4	55,5
81	4,4	14,6	24,8	33,9	40,7	46,7	52,5
84		13,0	22,8	31,7	38,3	44,2	49,9
90		10,1	19,3	27,7	34,1	39,5	44,9
96		7,7	16,3	24,3	30,5	35,6	40,7
98		7,0	15,3	23,2	29,3	34,3	39,3

(*) Gancho doble requerido / Required double hook
 () No levantar el contrapeso del Superlift / Don't lift superlift counterweight
 (#) Paso del cable no hasta el suelo / Don't leave the rope to the ground

**DEMAG CC 2800 - 1 NT**

CAPACIDADES DE PLUMA PRINCIPAL CON SUPERLIFT SSL/LSL / LIFTING CAPACITIES MAIN BOOM WITH SUPERLIFT SSL/LSL

600t

180 t		10 m x 10 m		SL-Radius 15 m		0 - 360°		DIN / ISO							
Radio Radius	120 m Pluma Principal / Main Boom							Radio Radius	126 m Pluma Principal / Main Boom						
	0	50	100	150	200	250	300		0	50	100	150	200	250	300
14	119,0*	119,0*	(119,0*)	(120,0*)	(120,0*)	(121,0*)	(122,0*)	16	106,0*	106,0*	(106,0*)	(107,0*)	(107,0*)	(108,0*)	(109,0*)
16	117,0*	117,0*	117,0*	(118,0*)	(118,0*)	(120,0*)	(121,0*)	18	104,0*	105,0*	105,0*	(106,0*)	(106,0*)	(107,0*)	(108,0*)
18	115,0*	116,0*	116,0*	(117,0*)	(117,0*)	(118,0*)	(120,0*)	20	103,0*	104,0*	105,0*	(106,0*)	(106,0*)	(106,0*)	(108,0*)
20	108,0*	114,0*	115,0*	(116,0*)	(116,0*)	(117,0*)	(118,0*)	22	95,0*	103,0*	104,0*	(105,0*)	(105,0*)	(106,0*)	(107,0*)
22	97,5*	113,0*	114,0*	115,0*	(115,0*)	(116,0*)	(117,0*)	24	85,5*	102,0*	103,0*	104,0*	(104,0*)	(105,0*)	(106,0*)
24	88,0	111,0*	112,0*	114,0*	(114,0*)	(114,0*)	(115,0*)	26	78,0	101,0*	102,0*	103,0*	(103,0*)	(104,0*)	(105,0*)
26	80,0	110,0*	111,0*	112,0*	(112,0*)	(113,0*)	(114,0*)	28	71,0	101,0*	102,0*	103,0*	(103,0*)	(103,0*)	(104,0*)
28	73,0	105,0*	109,0*	111,0*	111,0*	(111,0*)	(112,0*)	30	65,0	94,5*	101,0*	102,0*	(102,0*)	(102,0*)	(103,0*)
30	67,0	97,0*	108,0*	109,0*	109,0*	(110,0*)	(111,0*)	36	50,5	75,5	94,0	99,0*	100,0*	(100,0*)	(100,0*)
36	52,0	76,5	94,5*	103,0*	104,0*	104,0*	(105,0*)	42	39,5	59,5	76,0	88,5	96,0*	97,0*	(97,0*)
42	39,8	59,5	76,5	89,0	99,0*	100,0*	(100,0*)	48	29,8	47,6	62,5	74,5	84,5	92,5	92,5
48	30,1	48,0	63,0	75,5	85,0	95,0*	95,0*	54	22,2	38,0	52,0	63,5	72,5	81,0	88,0
54	22,6	38,4	52,5	64,0	73,0	81,5	90,0	60	16,5	30,6	44,1	54,5	62,5	70,5	78,5
60	16,9	31,0	44,6	55,0	63,0	71,0	79,0	66	11,8	24,5	37,2	47,2	54,5	61,5	69,0
66	12,3	25,0	37,7	47,8	55,0	62,5	69,5	72	8,1	19,7	31,3	40,8	48,0	54,5	61,0
72	8,6	20,2	31,7	41,4	48,6	55,0	62,0	78	4,9	15,6	26,2	35,3	42,1	48,4	54,5
78	5,4	16,1	26,7	35,9	42,8	49,0	55,0	80	4,0	14,4	24,7	33,7	40,5	46,6	52,5
81	4,1	14,3	24,5	33,5	40,3	46,2	52,0	84		12,2	22,0	30,7	37,3	43,1	48,9
84		12,7	22,5	31,3	37,9	43,7	49,5	90		9,2	18,4	26,7	32,9	38,4	43,8
90		9,8	18,9	27,3	33,6	39,0	44,5	96		6,8	15,3	23,2	29,3	34,4	39,5
96		7,4	15,9	23,9	30,0	35,1	40,2	102		4,5	12,6	20,2	26,0	30,8	35,6
102		5,2	13,3	20,9	26,7	31,5	36,3	103		4,1	12,2	19,8	25,5	30,3	35,0
105		4,1	12,1	19,6	25,3	30,0	33,9	108			10,3	17,6	23,1	27,7	32,1
106			11,7	19,1	24,8	29,5	32,9	110			9,5	16,7	22,2	26,7	30,3

Radio Radius	132 m Pluma Principal / Main Boom						
	0	50	100	150	200	250	300
16	92,0*	92,0*	(92,0*)	(93,0*)	(93,0*)	(94,0*)	(96,0*)
18	90,0*	91,0*	(91,0*)	(92,0*)	(92,0*)	(93,0*)	(95,0*)
20	88,0*	89,0*	89,0*	(91,0*)	(91,0*)	(92,0*)	(94,0*)
22	87,0*	88,0*	89,0*	(91,0*)	(91,0*)	(91,0*)	(93,0*)
24	83,0*	87,0*	88,0*	(90,0*)	(90,0*)	(91,0*)	(92,0*)
26	75,5	86,0*	87,0*	89,0*	(89,0*)	(90,0*)	(91,0*)
28	68,5	85,0*	86,0*	88,0*	(88,0*)	(89,0*)	(90,0*)
30	63,0	84,0*	86,0*	87,0*	(87,0*)	(88,0*)	(89,0*)
36	49,0	73,5	84,0*	85,5*	85,5*	(86,0*)	(86,5*)
42	38,2	58,5	74,5	83,0*	84,0*	84,0*	(85,0*)
48	28,7	46,6	61,5	73,5	81,0*	82,5*	82,5*
54	21,1	36,9	51,0	62,0	71,0	79,5*	80,0*
60	15,3	29,5	42,8	53,5	61,5	69,0	76,5
66	10,7	23,4	35,9	46,0	53,0	60,5	67,5
72	6,9	18,5	30,1	39,6	46,6	53,0	60,0
77	4,3	15,0	25,8	34,9	41,7	48,0	54,0
78		14,4	25,0	34,0	40,8	47,0	53,0
84		11,0	20,8	29,5	36,0	41,8	47,5
90		8,0	17,1	25,4	31,6	37,0	42,5
96		5,5	14,1	21,9	28,0	33,1	38,1
99		4,3	12,7	20,3	26,3	31,2	36,1
102			11,4	18,9	24,6	29,4	34,2
108			9,0	16,3	21,8	26,3	30,9
114			6,6	13,9	19,2	23,5	27,0

Radio Radius	138 m Pluma Principal / Main Boom						
	0	50	100	150	200	250	300
16	79,0*	79,0*	(79,0*)	(79,0*)	(79,0*)	(80,0*)	(82,0*)
18	77,0	77,0	(77,0)	(78,0)	(78,0)	(79,0*)	(80,0*)
20	74,0	75,0	(75,0)	(77,0)	(77,0)	(78,0)	(79,0*)
22	72,0	74,0	74,0	(76,0)	(76,0)	(77,0)	(78,0)
24	70,0	72,0	73,0	(75,0)	(75,0)	(75,0)	(77,0)
26	69,0	71,0	72,0	(73,0)	(73,0)	(74,0)	(75,0)
28	66,5	70,0	71,0	(72,0)	(72,0)	(73,0)	(74,0)
30	61,0	68,0	70,0	71,0	(71,0)	(72,0)	(73,0)
36	47,4	65,0	66,0	68,0	(68,0)	(68,5)	(69,5)
42	36,8	57,5	63,0	64,0	64,0	(65,0)	(66,0)
48	27,8	45,9	59,5	60,5	61,0	(61,0)	(62,0)
54	20,3	36,1	50,0	56,0	57,0	57,0	(58,0)
60	14,5	28,6	41,9	51,5	52,5	53,5	(53,5)
66	9,8	22,5	35,0	45,0	48,0	49,0	49,0
72	6,1	17,7	29,2	38,7	42,5	44,0	44,0
75	4,4	15,5	26,6	35,8	40,3	41,3	41,3
78		13,5	24,1	33,1	38,0	39,0	39,0
84		10,1	19,9	28,5	33,0	34,0	34,4
90		7,1	16,3	24,4	30,6	30,9	32,9
96		4,6	13,2	21,0	27,0	28,8	31,4
97		4,2	12,7	20,5	26,4	28,5	31,1
102			10,4	17,9	23,6	26,8	29,8
108			8,0	15,3	20,7	24,7	28,3
114			5,6	12,9	18,2	22,5	26,8
118			4,2	11,5	16,6	20,8	24,1
120				10,8	15,9	20,1	22,7
122				10,0	15,2	19,3	21,3

(*) Gancho doble requerido / Required double hook
 (.) No levantar el contrapeso del Superlift / Don't lift superlift counterweight
 (#) Paso del cable no hasta el suelo / Don't leave the rope to the ground

**DEMAG CC 2800 - 1 NT**

CAPACIDADES DEL PLUMÍN FIJO SH+LF2 / LIFTING CAPACITIES MAIN LUFFING JIB SH+LF2

600t

180 t		10 m x 10 m		0 - 360°		DIN / ISO					
12 m Plumín fijo / Luffing jib											
Radio Radius m	30 m	Radio Radius m	36 m	Radio Radius m	42 m	Radio Radius m	48 m	Radio Radius m	54 m	Radio Radius m	60 m
9	125,0	9	125,0	10	125,0	10	125,0	11	125,0	11	125,0
10	125,0	10	125,0	11	125,0	11	125,0	12	125,0	12	125,0
11	125,0	11	125,0	12	125,0	12	125,0	13	125,0	13	125,0
12	119,0	12	125,0	13	125,0	13	125,0	14	125,0	14	125,0
13	111,0	13	120,0	14	120,0	14	125,0	15	125,0	15	125,0
14	104,0	14	113,0	15	113,0	15	120,0	16	120,0	16	125,0
15	98,5	15	106,0	16	108,0	16	114,0	17	115,0	17	120,0
16	93,0	16	100,0	17	102,0	17	109,0	18	110,0	18	115,0
17	88,0	17	95,5	18	98,0	18	104,0	19	105,0	19	111,0
18	83,0	18	91,0	19	93,5	19	100,0	20	101,0	20	106,0
19	79,5	19	87,0	20	89,5	20	95,5	22	94,0	22	99,0
20	76,0	20	83,0	22	82,5	22	88,5	24	87,5	24	88,0
22	69,5	22	76,5	24	76,5	24	82,5	26	79,0	26	77,5
24	64,0	24	70,5	26	71,5	26	77,0	28	70,5	28	69,0
26	59,5	26	65,5	28	67,0	28	71,5	30	63,5	30	62,0
28	55,5	28	61,5	30	63,0	30	64,5	34	52,5	34	51,0
30	52,5	30	58,0	34	55,0	34	53,5	38	44,1	38	42,7
34	46,9	34	51,5	38	46,6	38	45,2	42	37,5	42	36,1
38	42,6	38	47,1	42	40,1	42	38,6	46	32,2	46	30,7
39	41,8	42	41,5	46	34,6	46	33,4	50	27,9	50	26,2
		45	37,5	50	30,6	50	29,1	54	24,1	54	22,3
						54	25,5	58	20,9	58	19,1
						55	24,7	60	18,5	62	16,3
										65	14,5

Radio Radius m	66 m	Radio Radius m	72 m	Radio Radius m	78 m	Radio Radius m	84m
12	125,0	12	125,0	13	125,0	13	125,0
13	125,0	13	125,0	14	125,0	14	125,0
14	125,0	14	125,0	15	125,0	15	125,0
15	125,0	15	125,0	16	125,0	16	124,0
16	125,0	16	125,0	17	121,0	17	116,0
17	125,0	17	125,0	18	113,0	18	109,0
18	120,0	18	118,0	19	107,0	19	102,0
19	115,0	19	111,0	20	100,0	20	96,5
20	108,0	20	104,0	22	90,0	22	86,0
22	97,0	22	93,0	24	80,5	24	77,5
24	87,0	24	83,5	26	73,0	26	70,0
26	76,5	26	75,5	28	66,0	28	63,0
28	68,5	28	67,0	30	59,0	30	57,5
30	61,0	30	60,0	34	47,8	34	46,5
34	50,0	34	48,8	38	39,2	38	37,9
38	41,7	38	40,3	42	32,3	42	30,7
42	35,0	42	33,6	46	26,6	46	25,0
46	29,6	46	27,9	50	21,9	50	20,2
50	24,9	50	23,2	54	18,0	54	16,3
54	21,0	54	19,3	58	14,7	57	13,7
58	17,7	58	16,0	60	13,2	58	13,0
62	15,0	62	13,2	62	11,8	62	10,1
66	12,6	63	12,6	66	9,4	66	7,7
67	12,0	66	10,8	70	7,3	68	6,6
70	10,5	70	8,7	72	6,3	70	5,5
71	10,0	74	6,9	74	5,4	74	3,7
		76	6,1	78	3,8		

**DEMAG CC 2800 - 1 NT**

CAPACIDADES DEL PLUMÍN FIJO SH/LH+LF2 / LIFTING CAPACITIES MAIN LUFFING JIB SH/LH+LF2

600t

180 t		10 m x 10 m		0 - 360°		DIN / ISO					
12 m - 10° Plumín fijo / Luffing jib											
Radio Radius m	66 m	Radio Radius m	72 m	Radio Radius m	78 m	Radio Radius m	84 m	Radio Radius m	90 m	Radio Radius m	96 m
12	125,0	12	125,0	13	116,0	14	107,0	14	91,0	15	86,5
13	125,0	13	125,0	14	116,0	15	107,0	15	91,0	16	86,5
14	125,0	14	125,0	15	114,0	16	106,0	16	91,0	17	85,5
15	125,0	15	125,0	16	112,0	17	104,0	17	90,0	18	84,5
16	125,0	16	125,0	17	111,0	18	103,0	18	88,5	19	83,5
17	125,0	17	123,0	18	109,0	19	102,0	19	87,5	20	82,5
18	121,0	18	120,0	19	108,0	20	100,0	20	86,0	22	80,5
19	116,0	19	113,0	20	103,0	22	89,5	22	84,0	24	75,5
20	11,0	20	106,0	22	92,5	24	80,5	24	78,0	26	68,5
22	98,0	22	95,5	24	83,5	26	73,0	26	71,0	28	62,5
24	88,0	24	86,0	26	75,5	28	66,5	28	64,5	30	57,0
26	78,0	26	77,0	28	68,0	30	60,0	30	59,0	34	47,5
28	69,5	28	68,5	30	61,0	34	49,1	34	48,3	38	38,9
30	62,0	30	61,5	34	49,9	38	40,5	38	39,7	42	31,9
34	51,0	34	50,5	38	41,4	42	33,8	42	32,9	46	26,1
38	42,7	38	42,0	42	34,7	46	28,0	46	27,1	50	21,4
42	36,0	42	35,3	46	29,1	50	23,3	50	22,4	54	17,4
46	30,7	46	29,8	50	24,4	54	19,4	54	18,4	58	14,1
50	26,1	50	25,2	54	20,5	58	16,1	58	15,1	59	13,3
54	22,2	54	21,3	58	17,2	62	13,2	61	12,9	62	11,2
58	18,9	58	18,0	62	14,4	63	12,6	62	12,3	66	8,7
62	16,1	62	15,2	65	12,5	66	10,8	66	9,8	70	6,6
66	13,8	66	12,8	66	11,9	70	8,7	70	7,7	74	4,7
70	11,7	67	12,2	70	9,8	74	6,8	73	6,2	76	3,8
71	11,2	70	10,7	74	8,0	76	6,0	74	5,8		
		74	8,9	78	6,4	78	5,2	78	4,1		
		76	8,1	79	6,0	82	3,8	79	3,8		
				81	5,3						

Radio Radius m	102 m
15	72,5
16	72,5
17	72,5
18	71,5
19	70,5
20	69,5
22	67,5
24	66,0
26	64,0
28	60,5
30	55,0
34	46,3
38	38,2
42	31,0
46	25,2
50	20,5
54	16,5
57	13,9
58	13,2
62	10,3
66	7,8