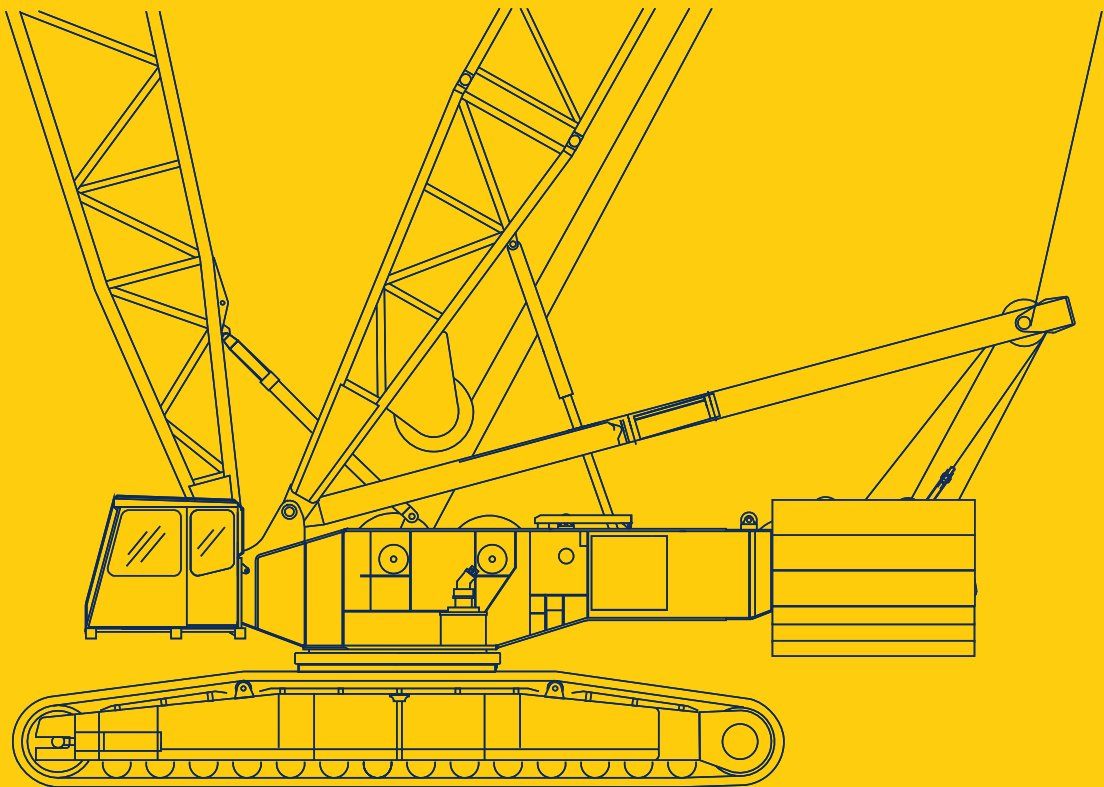




300 t

DEMAG CC 1800



PRESTACIONES DE VEHICULO / CARRIER PERFORMANCE

 1ª Velocidad
Travel speed

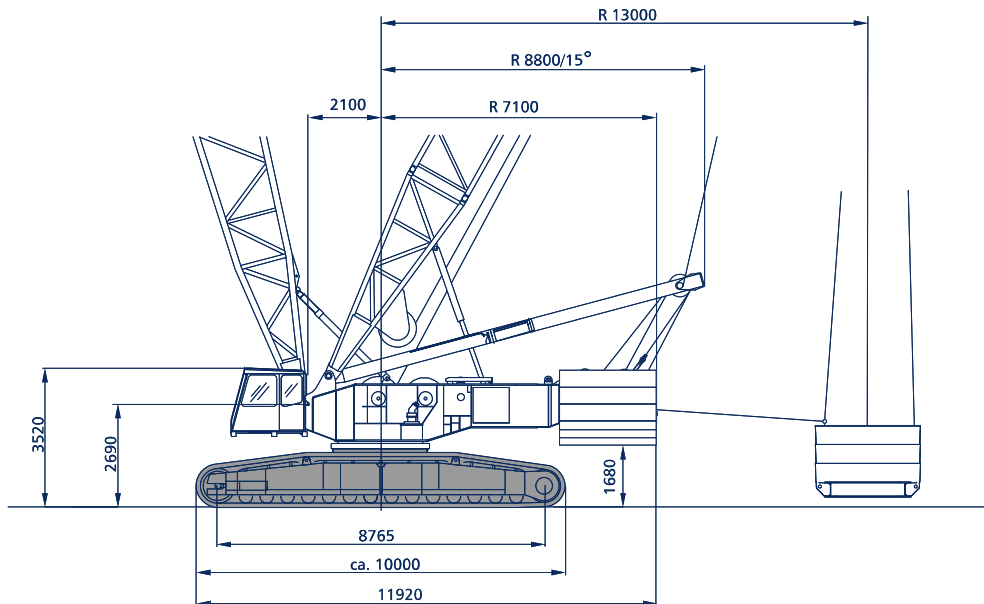
max. 2 km/h

PRESIONES TRANSMITIDAS AL SUELO / GROUND PRESSURE

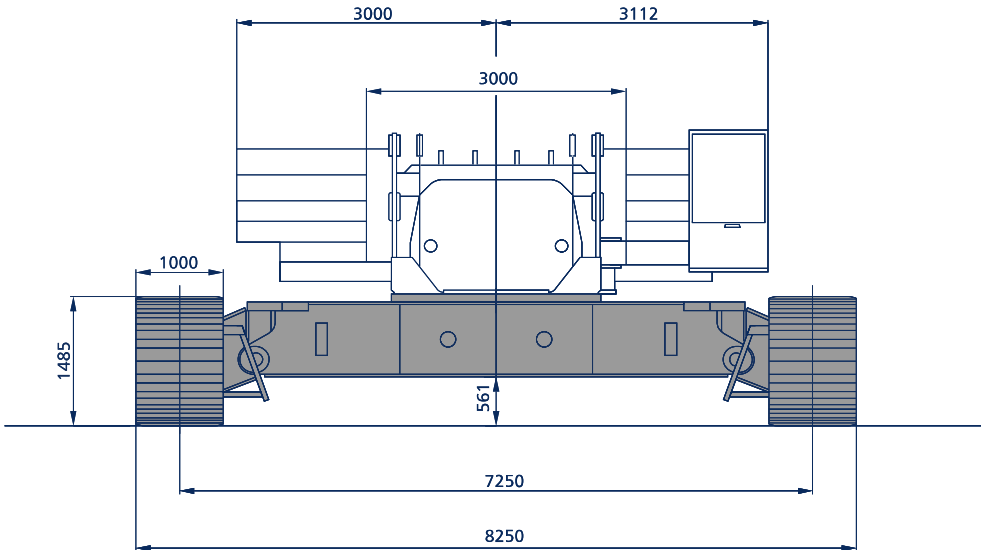
 Presiones transmitidas al suelo con 199 t de peso total
Ground pressure, based on 199 t total weight

 11,2 N / cm²
GANCHO / HOOK BLOCK

Capacidad de carga Possible load	Nº de poleas Number of sheaves	Nº de líneas Number of lines	Peso Weight	"D"
300 t	13	26	6000 kg	3,50 m
160 t	7	13	4800 kg	3,00 m
80 t	3	7	3300 kg	2,50 m
40 t	1	3	1700 kg	2,00 m



VELOCIDAD DE TRABAJO (INFINITAMENTE VARIABLE) / WORKING SPEED (INFINITELY VARIABLE)			
Mecanismos Mechanisms	Velocidad ¹ Speed ¹	Capacidad cable 1 línea Single line pull	Longitud cable cabestrante Length of hoist rope
Cabrestante I <i>Hoist I</i>	Max. 123 m / min.	133 kN / 118 kN ²	980 m
Cabrestante II <i>Hoist II</i>	Max. 119 m / min.	133 kN / 121 kN ²	650 m
Abatimiento de pluma <i>Boom derricking</i>	Max. 46,5 m / min.		700 m
Cabrestante de la pluma <i>Boom hoist</i>	Max. 25 m / min.		2 x 185 m
Cabrestante de plumin <i>Fly jib hoist</i>	Max. 43 m / min		450 m
Giro (RPM) <i>Slewing (RPM)</i>	1,1		



(1) Velocidad máxima / top layer
 (2) Sin / con el efecto del reenvío / without / with reeving effect considered

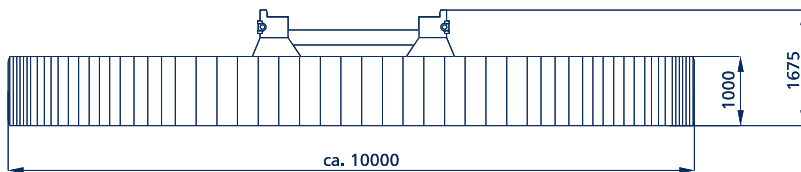
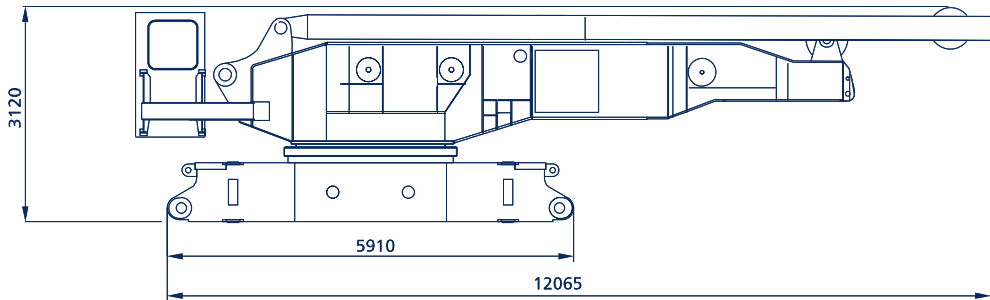
DEMAG CC 1800

DATOS TÉCNICOS / SPECIFICATIONS

300 t

PESOS / WEIGHTS	
Peso total incluido 90 t de contrapesos, 18 m de pluma SH y gancho <i>Total weight incl. 90 t counterweight, 18 m SH boom and hook block</i>	199 t
Superestructura con 2 Cabrestantes y caballetes <i>Superstructure with 2 winches, A-frame</i>	29,6 t
Chasis sin gatos <i>Carbody without jacks</i>	14,5 t
Chasis con gatos <i>Carbody with track shoes</i>	16,5 t
Cadenas con tejas <i>Crawlers with pads</i>	2 x 24 t

VERSIONES DE MAQUINA / MACHINE VERSIONS		
	Contrapesos 90 t Counterweight 90 t	Contrapeso adicional de 30 t y lastre central 30 t Add. counterweight 30 t and central ballast 30 t
Standard Standard	•	
Opción Option		•



DEMAG CC 1800

DATOS TÉCNICOS / SPECIFICATIONS

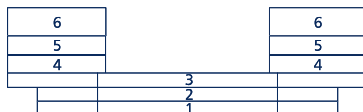


300 t

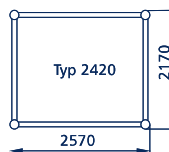
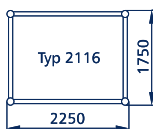
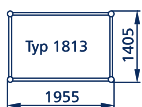
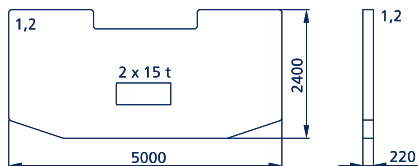
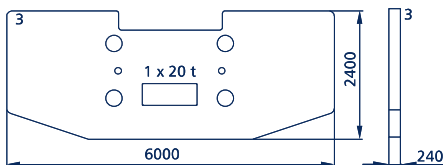
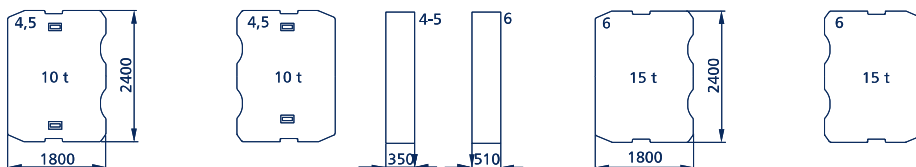
Configuración standard
Standard configuration



Configuración automontaje
Self-assembly configuration



Lastre central
Central ballast





DEMAG CC 1800

DATOS TÉCNICOS / SPECIFICATIONS

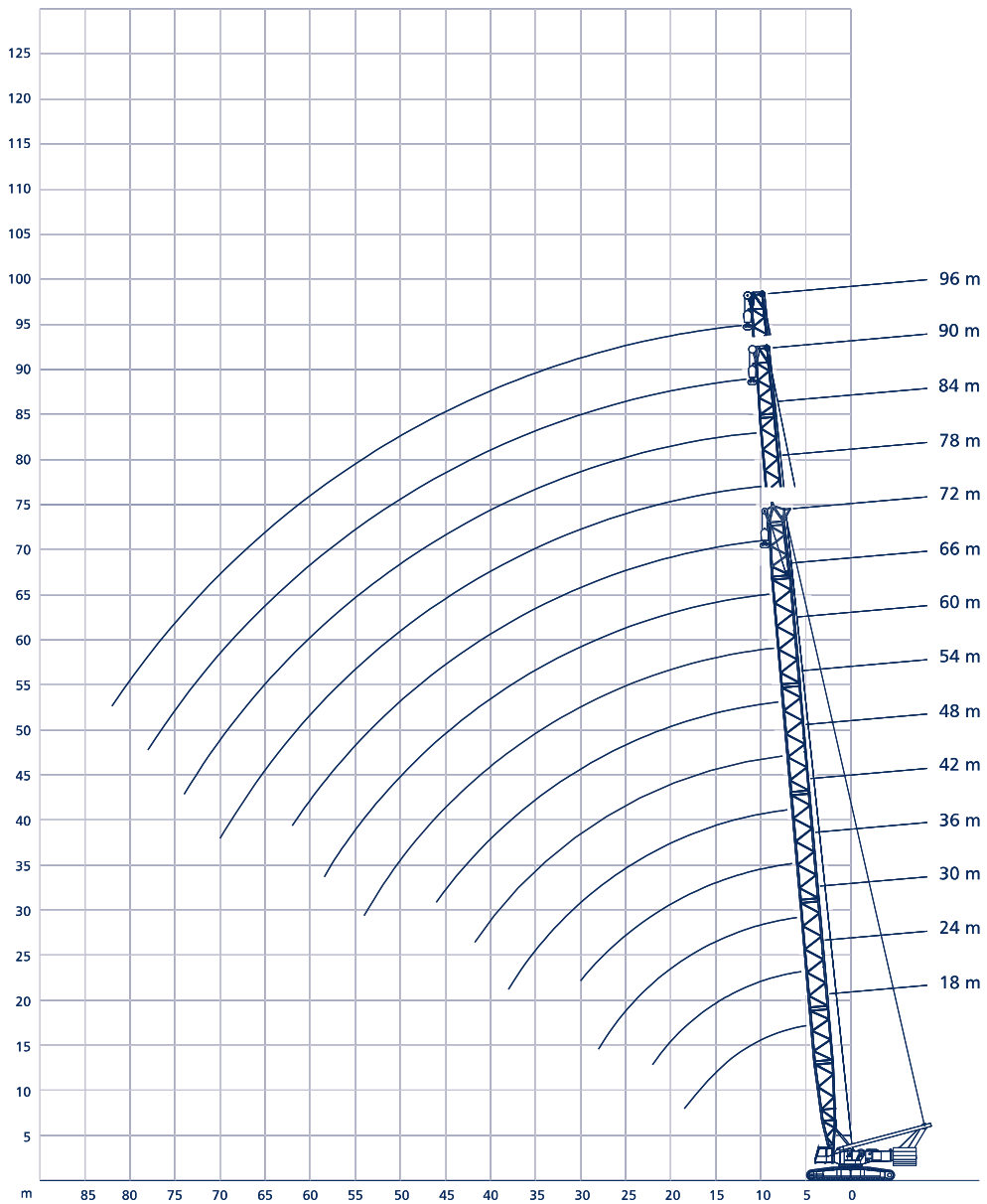
IZADO / DESCENSO SOBRE EL SUELO DE LOS SISTEMAS DE PLUMA CC1800 ERECTION / LOWERING OF THE CC 1800 BOOM SYSTEMS TO THE GROUND					
Versión Version	Pluma principal Main boom (m)	Plumín abatible Fly Jib (m)	Contrapeso Counterweight (t)	Contrapeso central Central ballast (t)	Notas Remarks
SH	18 - 72		120	30	
SH / LH SGL 46,5 m	54 - 90 *96		120 120	30 30	*Gancho en tierra *Hook block on the ground
SH / LH SGL 70,5 m	78 - 84 *90		120 120	30 30	*Gancho en tierra *Hook block on the ground
SW	24 - 60 **60 *60	18 - 66 30 - 36 42	120 120	30 30	Sin sist. suplemento poleas en cabeza pluma Without add. sheave assembly on boom head *Gancho en tierra *Hook block on the ground **Solo con grúa o equipo auxiliar **Only with assist crane or auxiliary equipment
LF SGL 46,5 m 10°, 30°	54 - 84 *78 *84 **84	12 - 36 36 24 36	120 120 120	30 30 30	Sin sist. suplemento poleas en cabeza pluma Without add. sheave assembly on boom head *Gancho en tierra *Hook block on the ground **Solo con grúa o equipo auxiliar **Only with assist crane or auxiliary equipment
LF 10°, 30°	30 - 72 *72	12 - 36 36	120 120	30 30	Sin sist. suplemento poleas en cabeza pluma Without add. sheave assembly on boom head *Gancho en tierra *Hook block on the ground
SSL	30 - 72				Con contrapeso SL With SL -counterweight
SSL / LSL	78 - 108				Con contrapeso SL With SL -counterweight
SWSL	30 - 72	18 - 66			Con contrapeso SL With SL -counterweight

DEMAG CC 1800



DIAGRAMA DE ALCANCE / WORKING RANGES
SH, SH / LH

300 t





DEMAG CC 1800
CAPACIDADES DE CARGA CON PLUMA PRINCIPAL / LIFTING CAPACITIES ON MAIN BOOM
300 t



120 t ¹⁾		7,25 m		OVER FRONT				360°	DIN / ISO	
Radio Radius m	Pluma principal / Main Boom									
	18	24	30	36	42	48	54	60	66	72
	t	t	t	t	t	t	t	t	t	t
5	273,0									
5,5	263,0	285,0								
6	254,0	276,0								
7	239,0	260,0	252,0							
8	227,0	244,0	243,0	242,0	240,0					
9	203,0	202,0	202,0	201,0	200,0	200,0				
10	170,0	169,0	169,0	168,0	167,0	167,0	166,0	140,0		
12	128,0	127,0	126,0	125,0	124,0	124,0	123,0	123,0	112,0	94,0
14	102,0	101,0	100,0	99,0	98,0	98,0	97,0	97,0	96,0	89,0
16	84,0	83,0	82,0	81,0	81,0	80,0	79,0	79,0	78,0	78,0
SH	18	72,0	70,0	69,0	68,0	67,0	67,0	66,0	66,0	65,0
	20		61,0	60,0	59,0	58,0	57,0	56,0	56,0	55,0
22		54,0	53,0	52,0	51,0	50,0	49,0	49,0	48,0	48,0
24			47,0	46,0	45,0	44,0	43,0	43,0	42,0	42,0
26			42,0	41,0	40,0	39,0	38,0	38,0	37,0	37,0
28			38,0	37,0	36,0	35,0	34,0	34,0	33,0	33,0
30				33,0	32,0	31,0	31,0	30,0	30,0	29,0
34					27,0	26,0	25,0	24,0	24,0	23,0
38					23,0	22,0	21,0	20,0	20,0	19,0
42						19,0	18,0	17,0	16,0	15,0
46							15,0	14,0	13,0	12,0
50								12,0	11,0	10,0
54								10,0	9,0	8,0
58									7,0	6,0
62										5,0

120 t ¹⁾		7,25 m		OVER FRONT				DIN / ISO		
Radio Radius m	Pluma principal / Main Boom									
	18	24	30	36	42	48	54	60	66	72
	t	t	t	t	t	t	t	t	t	t
5	300,0									
5,5	300,0	300,0								
6	300,0	300,0								
7	280,0	279,0	252,0							
8	246,0	244,0	243,0	242,0	240,0					
9	215,0	214,0	213,0	211,0	210,0	203,0				
10	191,0	190,0	189,0	188,0	187,0	186,0	167,0	140,0		
12	156,0	155,0	154,0	153,0	152,0	151,0	150,0	134,0	112,0	94,0
14	122,0	121,0	121,0	120,0	119,0	119,0	118,0	118,0	106,0	89,0
16	100,0	99,0	99,0	98,0	97,0	96,0	96,0	95,0	95,0	84,0
SH	18	85,0	84,0	83,0	82,0	81,0	81,0	80,0	79,0	79,0
	20		72,0	71,0	70,0	69,0	69,0	68,0	68,0	67,0
22		63,0	62,0	61,0	60,0	60,0	59,0	59,0	58,0	58,0
24			55,0	54,0	53,0	53,0	52,0	51,0	51,0	50,0
26			49,0	48,0	47,0	47,0	46,0	45,0	45,0	44,0
28			45,0	43,0	42,0	42,0	41,0	40,0	40,0	39,0
30				39,0	38,0	38,0	37,0	36,0	36,0	35,0
34					32,0	31,0	30,0	30,0	29,0	29,0
38					27,0	26,0	25,0	25,0	24,0	24,0
42						23,0	22,0	24,0	20,0	19,0
46							19,0	18,0	17,0	16,0
50								15,0	14,0	13,0
54								13,0	12,0	11,0
58									10,0	9,0
62										8,0

1) Con 30 t de contrapeso central / with 30 t central ballast

DEMAG CC 1800
CAPACIDADES DE CARGA CON PLUMA PRINCIPAL / LIFTING CAPACITIES ON MAIN BOOM
300 t



90 t 		 7,25 m		360°							DIN / ISO	
Radio Radius m	Pluma principal / Main Boom											
	18	24	30	36	42	48	54	60	66	72		
	t	t	t	t	t	t	t	t	t	t		
5	300,0											
5,5	300,0	300,0										
6	300,0	300,0										
7	262,0	261,0	252,0									
8	204,0	204,0	203,0	202,0	202,0							
9	165,0	164,0	163,0	163,0	162,0	162,0						
10	138,0	137,0	136,0	135,0	135,0	134,0	134,0	133,0				
12	103,0	102,0	101,0	101,0	100,0	99,0	99,0	98,0	98,0	94,0		
14	82,0	81,0	80,0	79,0	78,0	78,0	77,0	77,0	76,0	76,0		
16	67,0	66,0	66,0	65,0	64,0	63,0	63,0	62,0	62,0	61,0		
SH 18	57,0	56,0	55,0	54,0	53,0	53,0	52,0	52,0	51,0	51,0		
20		48,0	47,0	46,0	46,0	45,0	44,0	44,0	43,0	43,0		
22		42,0	41,0	40,0	39,0	39,0	38,0	38,0	37,0	37,0		
24			37,0	35,0	35,0	34,0	33,0	33,0	32,0	32,0		
26			33,0	31,0	31,0	30,0	29,0	29,0	28,0	28,0		
28			29,0	28,0	27,0	26,0	26,0	25,0	25,0	24,0		
30				25,0	24,0	24,0	23,0	22,0	22,0	21,0		
34					20,0	19,0	18,0	18,0	17,0	16,0		
38					17,0	16,0	15,0	14,0	13,0	12,0		
42						13,0	12,0	11,0	10,0	10,0		
46							10,0	9,0	8,0	7,0		
50								7,0	6,0	5,0		
54								5,0	4,0	4,0		
58									3,0			



90 t 		 7,25 m		360°							DIN / ISO	
Radio Radius m	Pluma principal / Main Boom											
	18	24	30	36	42	48	54	60	66	72		
	t	t	t	t	t	t	t	t	t	t		
5,5		238,0										
6	210,0	231,0										
7	199,0	220,0	236,0									
8	186,0	185,0	185,0	184,0	183,0							
9	150,0	149,0	149,0	148,0	147,0	147,0						
10	125,0	124,0	124,0	123,0	122,0	122,0	121,0	121,0				
12	94,0	93,0	92,0	91,0	90,0	90,0	89,0	89,0	88,0	88,0		
14	74,0	73,0	72,0	72,0	71,0	70,0	70,0	69,0	69,0	68,0		
16	61,0	60,0	59,0	58,0	57,0	57,0	56,0	56,0	55,0	55,0		
18	52,0	51,0	50,0	49,0	48,0	47,0	47,0	46,0	46,0	45,0		
SH 20		43,0	43,0	42,0	41,0	40,0	39,0	39,0	38,0	38,0		
22		38,0	37,0	36,0	35,0	35,0	34,0	33,0	33,0	32,0		
24			33,0	32,0	31,0	30,0	29,0	29,0	28,0	28,0		
26			29,0	28,0	27,0	26,0	26,0	25,0	24,0	24,0		
28			26,0	25,0	24,0	23,0	22,0	22,0	21,0	21,0		
30				22,0	21,0	21,0	20,0	19,0	19,0	18,0		
34					17,0	16,0	15,0	15,0	14,0	13,0		
38					14,0	13,0	12,0	11,0	11,0	10,0		
42						11,0	10,0	9,0	8,0	7,0		
46							8,0	7,0	6,0	5,0		
50								5,0	4,0	3,0		
54								4,0	3,0			

120 t ¹⁾				7,25 m		OVER FRONT		360° DIN / ISO				
Radio Radius m	Pluma principal / Main Boom								Pluma principal / Main Boom			
	54	60	66	72	78	84	90	96	78	84	90	
	t	t	t	t	t	t	t	t	t	t	t	
9	140,0											
10	140,0											
12	127,0	117,0	102,0									
14	100,0	100,0	87,0	84,0	72,0	62,0			80,0	70,0		
16	83,0	82,0	80,0	77,0	68,0	59,0	48,0	41,0	74,0	69,0	56,0	
18	70,0	69,0	69,0	70,0	64,0	57,0	46,0	39,0	69,0	67,0	54,0	
20	60,0	60,0	59,0	64,0	60,0	55,0	44,0	37,0	64,0	65,0	52,0	
22	52,0	52,0	52,0	59,0	56,0	53,0	42,0	36,0	58,0	58,0	50,0	
24	46,0	46,0	46,0	51,0	51,0	51,0	41,0	34,0	50,0	50,0	49,0	
26	41,0	41,0	41,0	45,0	45,0	45,0	39,0	33,0	44,0	44,0	44,0	
28	37,0	37,0	37,0	40,0	40,0	40,0	37,0	32,0	39,0	39,0	39,0	
SH/ LH ²⁾	30	34,0	33,0	36,0	36,0	35,0	35,0	31,0	SH/ LH ³⁾	35,0	35,0	34,0
	34	28,0	27,0	33,0	32,0	32,0	32,0	30,0		32,0	31,0	31,0
	38	24,0	23,0	27,0	27,0	26,0	26,0	25,0		26,0	25,0	25,0
	42	20,0	20,0	22,0	22,0	22,0	22,0	21,0		21,0	21,0	21,0
	46	18,0	17,0	19,0	19,0	18,0	18,0	17,0		18,0	17,0	17,0
	50		15,0	16,0	16,0	15,0	15,0	14,0		15,0	14,0	14,0
	54		13,0	14,0	14,0	13,0	13,0	12,0		13,0	12,0	12,0
	58			12,0	12,0	11,0	11,0	10,0		11,0	10,0	9,9
	62			10,0	10,0	9,0	9,0	8,0		9,3	8,5	8,2
	66			9,0	8,0	8,0	7,0	7,0		7,9	7,0	6,7
	70				7,0	6,0	6,0	5,0		6,6	5,8	5,4
	74				6,0	5,0	5,0	4,0		5,6	4,7	4,3
	78					4,0	4,0	3,0			3,7	3,3

120 t ¹⁾				7,25 m		OVER FRONT		360° DIN / ISO				
Radio Radius m	Pluma principal / Main Boom								Pluma principal / Main Boom			
	54	60	66	72	78	84	90	96	78	84	90	
	t	t	t	t	t	t	t	t	t	t	t	
9	140,0											
10	140,0											
12	135,0	117,0	102,0									
14	121,0	100,0	87,0	84,0	72,0	62,0						
16	99,0	95,0	80,0	77,0	68,0	59,0	48,0	41,0				
18	83,0	83,0	73,0	70,0	64,0	57,0	46,0	39,0	80,0	70,0		
20	71,0	71,0	67,0	64,0	60,0	55,0	44,0	37,0	74,0	69,0	56,0	
22	62,0	62,0	61,0	59,0	56,0	53,0	42,0	36,0	69,0	67,0	54,0	
24	55,0	54,0	54,0	54,0	53,0	52,0	41,0	34,0	64,0	65,0	52,0	
26	49,0	48,0	48,0	50,0	49,0	47,0	39,0	33,0	59,0	63,0	50,0	
28	44,0	43,0	43,0	46,0	46,0	47,0	37,0	32,0	55,0	60,0	49,0	
SH/ LH ²⁾	30	40,0	39,0	42,0	43,0	42,0	36,0	31,0	50,0	52,0	47,0	
	34	33,0	33,0	38,0	39,0	38,0	35,0	30,0	46,0	46,0	46,0	
	38	28,0	28,0	32,0	32,0	31,0	31,0	29,0	SH/ LH ³⁾	42,0	41,0	41,0
	42	24,0	24,0	27,0	27,0	26,0	26,0	26,0		38,0	37,0	37,0
	46	21,0	21,0	23,0	23,0	23,0	22,0	22,0		31,0	30,0	30,0
	50		18,0	19,0	20,0	19,0	19,0	18,0		26,0	25,0	25,0
	54		16,0	16,0	17,0	16,0	16,0	15,0		22,0	21,0	21,0
	58			14,0	15,0	14,0	14,0	13,0		19,0	18,0	18,0
	62			12,0	13,0	12,0	12,0	11,0		16,0	15,0	15,0
	66			9,0	11,0	10,0	10,0	9,0		14,0	13,0	13,0
	70				10,0	9,0	8,0	8,0		12,0	11,0	11,0
	74				8,0	8,0	7,0	7,0		10,0	9,7	9,3
	78					6,0	6,0	5,0		9,0	8,2	7,9
	82						5,0	4,0		8,0	7,0	6,6
								3,0			6,0	5,5
												4,5

1) Con 30 t de contrapeso central / with 30 t central ballast
 2) Longitud de base pesada 46,5 m (tipo 2420) / heavy base length 46,5 m (type 2420)
 3) Longitud de base pesada 70,5 m (tipo 2420) / heavy base length 70,5 m (type 2420)

90 t 		 7,25 m		360°		DIN / ISO					
Radio Radius m	Pluma principal / Main Boom								Pluma principal / Main Boom		
	54,0	60,0	66,0	72,0	78,0	84,0	90,0	96,0	78,0	84,0	90,0
	t	t	t	t	t	t	t	t	t	t	t
9	140,0										
10	137,0										
12	102,0	117,0	102,0								
14	81,0	80,0	80,0	84,0	72,0	62,0			80,0	70,0	
16	66,0	66,0	65,0	77,0	68,0	59,0	48,0	41,0	74,0	69,0	56,0
18	55,0	55,0	55,0	65,0	64,0	57,0	46,0	39,0	64,0	64,0	54,0
20	47,0	47,0	47,0	54,0	54,0	54,0	44,0	37,0	54,0	53,0	52,0
22	41,0	41,0	41,0	46,0	46,0	46,0	42,0	36,0	46,0	45,0	45,0
24	36,0	36,0	36,0	40,0	40,0	40,0	39,0	34,0	39,0	39,0	39,0
26	32,0	32,0	31,0	35,0	35,0	34,0	34,0	33,0	34,0	34,0	33,0
SH/ LH ²⁾	28	29,0	28,0	28,0	27,0	27,0	27,0	26,0	30,0	30,0	29,0
	30	26,0	25,0	25,0	25,0	24,0	24,0	23,0	27,0	26,0	26,0
	34	21,0	21,0	20,0	20,0	19,0	19,0	18,0	24,0	23,0	23,0
	38	18,0	17,0	17,0	16,0	16,0	15,0	15,0	19,0	18,0	18,0
	42	15,0	14,0	14,0	13,0	13,0	12,0	12,0	15,0	15,0	14,0
	46	13,0	12,0	12,0	11,0	11,0	10,0	9,0	12,0	12,0	11,0
	50		10,0	10,0	9,0	9,0	8,0	7,0	10,0	9,5	9,3
	54		9,0	8,0	7,0	7,0	6,0	6,0	8,3	7,5	7,3
	58			7,0	6,0	6,0	5,0	4,0	6,7	5,9	5,6
	62				5,0	5,0	4,0	3,0	5,3	4,5	4,2
	66					4,0	3,0		4,1	3,3	3,0
	70					3,0			3,1		
	74										

90 t 		 7,25 m		360°		DIN / ISO					
Radio Radius m	Pluma principal / Main Boom								Pluma principal / Main Boom		
	54,0	60,0	66,0	72,0	78,0	84,0	90,0	96,0	78,0	84,0	90,0
	t	t	t	t	t	t	t	t	t	t	t
9	140,0										
10	125,0										
12	92,0	92,0	92,0								
14	73,0	72,0	72,0	84,0	72,0	62,0	48,0	41,0	80,0	70,0	
16	59,0	59,0	59,0	72,0	68,0	59,0	46,0	39,0	71,0	69,0	56,0
18	50,0	49,0	49,0	58,0	58,0	57,0	46,0	39,0	58,0	57,0	54,0
20	42,0	42,0	42,0	49,0	49,0	48,0	44,0	37,0	48,0	47,0	46,0
22	37,0	39,0	36,0	41,0	41,0	41,0	40,0	36,0	41,0	40,0	39,0
24	32,0	32,0	32,0	36,0	36,0	35,0	35,0	33,0	35,0	34,0	34,0
26	28,0	28,0	28,0	31,0	31,0	30,0	30,0	29,0	30,0	30,0	29,0
SH/ LH ²⁾	28	25,0	25,0	24,0	24,0	24,0	23,0	22,0	26,0	26,0	25,0
	30	23,0	22,0	22,0	22,0	21,0	21,0	20,0	23,0	23,0	22,0
	34	19,0	18,0	18,0	17,0	17,0	16,0	15,0	21,0	20,0	20,0
	38	15,0	15,0	14,0	14,0	14,0	13,0	12,0	16,0	15,0	15,0
	42	13,0	12,0	12,0	11,0	11,0	10,0	9,0	13,0	12,0	12,0
	46	11,0	10,0	10,0	9,0	9,0	8,0	7,0	10,0	9,7	9,4
	50		8,0	8,0	7,0	7,0	6,0	5,0	8,2	7,5	7,2
	54		7,0	6,0	6,0	5,0	5,0	4,0	6,4	5,6	5,4
	58			5,0	5,0	4,0	3,0	3,0	5,0	4,1	3,8
	62				3,0	3,0			3,7	2,9	2,5
	66								2,6		

1) Con 30 t de contrapeso central / with 30 t central ballast
 2) Longitud de base pesada 46,5 m (tipo 2420) / heavy base length 46,5 m (type 2420)
 3) Longitud de base pesada 70,5 m (tipo 2420) / heavy base length 70,5 m (type 2420)

120 t		7,25 m		SL-Radius 13 m		360°		DIN / ISO	
Radio Radius m	30 m Pluma principal / Main boom								
	0	40	80	120	160	180	200		
	t	t	t	t	t	t	t		
6	221	281						300	
7	210	281						300	
8	200	281	300					300	
9	189	262	300					300	
10	170	236	272	289				291	
12	135	189	228	258				274	
14	108	154	193	221	248		256	256	
16	89	128	163	193	217		228	228	
SSL	18	75	109	141	169	192	203	203	
	20	65	95	124	149	173	182	182	
	22	57	83	110	133	155	165	165	
	24	51	74	98	120	140	150	150	
	26	46	67	89	109	128	134	134	
	28	41	61	81	100	116	116	116	

Radio Radius m	48 m Pluma principal / Main boom								
	0	40	80	120	160	180	200		
	t	t	t	t	t	t	t		
8	209	232*						242*	
9	186	232*	242*					242*	
10	167	232*	242*					242*	
12	133	190	224	242*				242*	
14	105	152	192	218	242*			242*	
16	87	126	163	190	213	225*		225*	
18	73	107	140	168	189	199		199	
20	63	92	122	149	169	179		179	
SSL	22	55	81	107	132	153	162	162	
	24	48	72	96	119	139	148	148	
	26	43	65	86	108	127	136	136	
	28	39	58	78	98	116	124	124	
	30	35	53	72	90	107	115	115	
	34	29	45	61	77	92	99	99	
	38	24	39	53	67	80	86	86	
	42	21	34	46	59	71	76	76	

Radio Radius m	36 m Pluma principal / Main boom						
	0	40	80	120	160	180	200
	t	t	t	t	t	t	t
7	229	288					288
8	210	288	288				288
9	187	260	288				288
10	169	235	271	288			288
12	135	189	226	257	288		280
14	107	153	193	220	246	260	260
16	88	127	163	192	215	227	227
18	74	108	141	169	191	201	201
SSL	20	64	94	123	149	171	181
	22	56	82	109	133	155	164
	24	50	73	97	119	140	150
	26	44	66	88	108	127	136
	28	40	60	80	99	116	125
	30	36	55	73	91	107	115

Radio Radius m	54 m Pluma principal / Main boom						
	0	40	80	120	160	180	200
	t	t	t	t	t	t	t
9	185	200					218*
10	166	196	209*				218*
12	133	190	209*	213*			213*
14	105	152	191	209*			203*
16	86	125	163	189	194		194
18	72	106	140	167	185		185
20	62	92	121	148	168	176	176
22	54	80	107	132	152	161	161
SSL	24	47	71	95	119	139	147
	26	42	64	86	107	126	135
	28	38	58	78	97	115	124
	30	34	52	71	89	106	114
	34	28	44	60	76	91	98
	38	24	38	52	66	79	86
	42	20	33	45	58	70	76
	46	17	29	40	52	63	68

Radio Radius m	42 m Pluma principal / Main boom						
	0	40	80	120	160	180	200
	t	t	t	t	t	t	t
7	238	250					279*
8	209	250	274*				279*
9	186	250	274*				279*
10	168	234	270*	274*			279*
12	134	189	225	256	279*		279*
14	106	153	193	219	245	259*	259*
16	87	126	163	191	214	226	226
18	73	107	141	169	190	200	200
SSL	20	63	93	122	148	170	180
	22	55	82	108	132	154	163
	24	49	73	96	119	139	149
	26	44	65	87	108	127	136
	28	39	59	79	99	116	125
	30	36	54	72	91	107	115
	34	30	46	62	78	92	99
	38	25	39	54	68	81	87

Radio Radius m	60 m Pluma principal / Main boom						
	0	40	80	120	160	180	200
	t	t	t	t	t	t	t
9	167	169					201*
10	167	169					201*
12	132	169	181*				201*
14	104	151	181*	184*			201*
16	85	125	163	181*			191*
18	72	106	139	167	181*		181*
20	61	91	121	149	168	172	172
22	53	80	106	132	152	160	160
SSL	24	47	71	95	118	138	146
	26	42	63	85	107	126	134
	28	37	57	77	97	115	123
	30	33	52	70	89	106	114
	34	27	43	59	75	91	98
	38	23	37	51	65	79	85
	42	19	32	45	57	70	75
	46	16	28	39	51	62	67
	50	14	25	35	46	56	61
	54	12	22	32	41	51	55

1) Con 30 t de contrapeso central / with 30 t central ballast
 *Gancho sin llegar al suelo / Hook block does not reach the ground

120 t ¹⁾		7,25 m		SL-Radius 13 m		360°		DIN / ISO							
Radio Radius m	66 m Pluma principal / Main boom							Radio Radius m	78 m Pluma principal / Main boom						
	0	40	80	120	160	180	200		0	40	80	120	160	180	200
	t	t	t	t	t	t	t		t	t	t	t	t	t	t
10	141	144					158	10	107						118
12	132	144					158	12	107	107					118
14	104	141	151				158	14	105	107					118
16	85	124	151	156			158	16	86	107	111				118
18	71	105	139	148			155	18	73	106	111				118
20	61	91	120	142	149		149	20	62	92	111				118
22	53	79	106	132	143		143	22	54	81	107	113			118
24	46	70	94	118	137	138	138	24	48	72	96	113			118
SSL	26	41	63	84	106	126	133	133	26	43	64	86	108	117	117
	28	37	57	76	96	115	123	123	28	38	58	78	98	116	116
	30	33	51	70	88	106	114	114	30	34	53	71	90	108	114
	34	27	43	59	75	91	98	98	34	28	44	60	76	92	100
	38	22	36	51	65	79	85	85	38	24	38	52	66	80	87
	42	19	31	44	57	69	75	75	42	20	33	45	58	71	77
	46	16	27	39	50	62	67	67	46	18	29	40	52	63	69
	50	13	24	34	45	55	60	60	50	15	25	36	46	57	62
	54	11	21	31	40	50	55	55	54	12	22	32	42	51	56
	58	9	19	28	37	46	50	50	58	11	20	29	38	47	51
									62	9	18	26	35	43	47
									66	8	16	24	32	40	43
									70	7	15	22	29	37	40

Radio Radius m	72 m Pluma principal / Main boom						
	0	40	80	120	160	180	200
	t	t	t	t	t	t	t
10	121	124					141
12	121	124					141
14	104	124	131				141
16	85	121	131				141
18	71	105	131	134			141
20	60	90	120	129			137
22	52	79	105	123	133		133
24	46	70	94	117	129		129
SSL	26	41	62	84	106	125	125
	28	36	56	76	96	115	121
	30	32	51	69	88	106	113
	34	26	42	58	74	90	97
	38	22	36	50	64	78	85
	42	18	31	43	56	69	75
	46	15	27	38	50	61	67
	50	12	23	34	44	55	60
	54	10	20	30	40	49	54
	58	8	18	27	36	45	49
	62	7	16	24	33	41	45

Radio Radius m	84 m Pluma principal / Main boom						
	0	40	80	120	160	200	
	t	t	t	t	t	t	
12	89	91				100	
14	89	91				100	
16	86	91				100	
18	72	91	94			100	
20	62	91	94			100	
22	54	80	94			99	
24	47	71	94	96		99	
26	42	64	85	96		97	
SSL/LSL	28	38	58	77	93	95	
	30	34	52	71	89	92	
	34	28	44	60	76	84	
	38	23	37	51	66	75	
	42	20	32	45	58	68	
	46	17	28	40	51	61	
	50	14	25	35	46	55	
	54	12	22	31	41	50	
	58	10	19	28	37	45	
	62	8	17	26	34	41	
	66	7	15	23	31	37	
	70	6	14	21	29	33	
	74	5	12	20	26	29	



1) Con 30 t de contrapeso central / with 30 t central ballast

120 t		7,25 m		SL-Radius 13 m		360°		DIN / ISO							
Radio Radius m	90 m Pluma principal / Main boom							Radio Radius m	102 m Pluma principal / Main boom						
	0	40	80	120	160	200	0		40	80	120	160	200		
	t	t	t	t	t	t	t		t	t	t	t	t		
12	77						86	12	57						62
14	76	78					86	14	57						62
16	76	78					85	16	57	57					62
18	72	78					84	18	57	57					62
20	62	78	79				84	20	57	57					62
22	54	78	79				83	22	53	57					61
24	47	71	79				83	24	47	57					61
26	42	64	79				82	26	41	57	57				60
SSL	28	38	57	77	80		81	SSL/LSL	28	37	57	57			60
	30	34	52	71	79		80		30	33	51	57			59
	34	28	44	60	76		76		34	27	43	56	57		57
	38	23	37	51	65	71	71		38	22	36	50	55		56
	42	19	32	45	57	66	66		42	18	31	44	53		54
	46	16	28	39	51	60	60		46	15	27	39	50	52	52
	50	14	24	35	45	54	54		50	13	24	34	45	50	50
	54	12	22	31	41	47	47		54	11	21	30	40	47	47
	58	10	19	28	37	41	41		58	9	18	27	36	44	44
	62	8	17	25	34	36	39		62	7	16	24	33	41	41
	66	7	15	23	31	31	31		66	6	14	22	30	38	38
	70	6	13	21	27	27	27		70	4	12	20	27	35	36
	74	5	12	19	24	24	24		74	3	11	18	25	32	33
	78	4	11	18	23	23	23		78		9	16	23	30	30
									82			8	15	21	28
									86			7	13	20	25
									90			6	12	18	23

Radio Radius m	96 m Pluma principal / Main boom						
	0	40	80	120	160	180	200
	t	t	t	t	t	t	t
12	66						70
14	66	67					70
16	66	67					69
18	66	67					69
20	61	66					68
22	53	66	66				67
24	47	65	65				66
26	41	63	65				66
SSL	28	37	57	64			65
	30	33	52	63			64
	34	27	43	59	61		62
	38	23	37	51	59		60
	42	19	32	44	56		57
	46	16	27	39	50	55	55
	50	13	24	34	45	52	52
	54	11	21	31	40	49	49
	58	9	19	28	36	45	47
	62	7	16	25	33	41	44
	66	6	14	22	30	38	41
	70	5	13	20	28	35	38
	74	4	11	18	25	32	35
	78	3	10	17	23	30	32
	82		9	15	22	28	29

Radio Radius m	108 m Pluma principal / Main boom				
	0	40	80	120	180
	t	t	t	t	t
14	43				47
16	42				46
18	42	43			45
20	41	42			44
22	40	41			42
24	39	39			41
26	37	38			39
28	36	36			37
SSL/LSL	30	32	35		35
	34	26	32	32	32
	38	21	29	29	29
	42	18	27	27	27
	46	14	25	25	25
	50	12	23	24	24
	54	10	20	22	22
	58	8	17	21	21
	62	6	15	20	20
	66	5	13	19	19
	70	4	11	18	19
	74	3	10	17	18
	78		9	16	17
	82		7	14	17
	86		6	13	16
	90		5	11	16
	94		5	10	15

1) Con 30 t de contrapeso central / with 30 t central ballast

90 t		7,25 m		SL-Radius 13 m		360°		DIN / ISO							
Radio Radius m	30 m Pluma principal / Main boom							Radio Radius m	48 m Pluma principal / Main boom						
															
	0	40	80	120	160	180	200		0	40	80	120	160	180	200
↑	↑	↑	↑	↑	↑	↑	↑	↑	↑	↑	↑	↑	↑	↑	
6	173	281						8	200	232*					242*
7	166	281						9	161	232*	242*				242*
8	161	279	300					10	134	210	242*				242*
9	156	249	289					12	99	157	215	242*			242*
10	135	212	261	289				14	78	124	171	210	236*		242*
12	101	159	217	248				16	63	102	142	181	206*	218	218
14	80	127	173	213	239			18	53	87	120	154	182	193	193
16	65	105	144	183	209	221		20	45	75	104	134	164	193	173
SSL	18	55	89	123	156	186	196	22	39	65	92	118	145	156	156
	20	47	77	107	136	166	176	24	34	58	82	105	129	141	141
	22	41	68	94	121	147	160	26	30	52	73	95	117	128	128
	24	37	60	84	108	132	144	28	27	47	66	86	106	116	116
	26	33	54	76	98	119	130	30	24	42	61	79	97	107	107
	28	29	49	69	89	109	116	34	19	35	51	67	83	91	91
								38	16	30	44	58	72	80	80
								42	13	26	39	51	64	70	70




Radio Radius m	36 m Pluma principal / Main boom						
	0	40	80	120	160	180	200
	↑	↑	↑	↑	↑	↑	↑
7	186	288					288
8	180	278	288				288
9	162	248	288				288
10	135	211	260	288			288
12	100	156	216	247	278		280
14	79	126	172	212	238		251
16	65	104	143	182	208	220	220
18	54	88	122	155	184	195	195
SSL	20	46	76	106	135	165	175
	22	40	67	93	120	146	158
	24	35	59	83	107	131	143
	26	32	53	75	97	118	129
	28	28	48	68	88	108	118
	30	25	44	62	81	99	108


Radio Radius m	54 m Pluma principal / Main boom						
	0	40	80	120	160	180	200
	↑	↑	↑	↑	↑	↑	↑
9	160	200					218*
10	133	196	209*				218*
12	98	156	209*	213*			213*
14	77	124	171	209*			203*
16	63	102	141	180	194		194
18	52	86	120	153	182		185
20	44	74	104	133	163	172	172
22	38	65	91	117	144	155	155
SSL	24	33	57	81	105	129	140
	26	29	51	73	94	116	127
	28	26	46	66	86	106	115
	30	23	42	60	78	97	106
	34	19	35	51	67	82	90
	38	15	29	43	58	72	79
	42	12	25	38	50	63	69
	46	10	22	33	45	56	62


Radio Radius m	42 m Pluma principal / Main boom						
	0	40	80	120	160	180	200
	↑	↑	↑	↑	↑	↑	↑
7	201	250					279*
8	195	250	274*				279*
9	161	247	274*				279*
10	134	210	259*	274*			279*
12	99	157	215	246	277*		279*
14	78	125	172	211	237		250
16	65	10	142	181	207	219	219
18	53	87	121	155	183	194	194
SSL	20	46	75	105	135	164	174
	22	40	66	92	119	145	157
	24	35	58	82	106	130	142
	26	31	52	74	96	117	128
	28	27	47	67	87	107	117
	30	25	43	61	80	98	107
	34	20	36	52	68	84	92
	38	17	31	45	59	73	80

Radio Radius m	60 m Pluma principal / Main boom						
	0	40	80	120	160	180	200
	↑	↑	↑	↑	↑	↑	↑
9	159	169					201*
10	133	169					201*
12	98	156	181*				201*
14	77	123	170	184*			201*
16	62	101	141	180*			191*
18	52	85	119	153	181*		181*
20	44	73	103	133	162	171	171
22	38	64	91	117	143	155	155
SSL	24	33	57	80	104	128	140
	26	29	50	72	94	115	126
	28	25	45	65	85	105	115
	30	23	41	59	78	96	105
	34	18	34	50	66	82	90
	38	14	29	43	57	71	78
	42	11	24	37	50	62	69
	46	9	21	33	44	55	61
	50	7	18	29	39	50	55
	54	6	16	26	36	45	50

*Gancho sin llegar al suelo / Hook block does not reach the ground

90 t		 7,25 m						SL-Radius 13 m		360°		DIN / ISO				
Radio Radius m	66 m Pluma principal / Main boom							Radio Radius m	78 m Pluma principal / Main boom							
																
	0	40	80	120	160	180	200		0	40	80	120	160	180	200	
	t	t	t	t	t	t	t	t	t	t	t	t	t	t	t	
10	132	144						107								118
12	98	144	151					98	107							118
14	76	123	151					77	107							118
16	62	101	140	156				63	102	111						118
18	51	85	119	148				53	86	111						118
20	43	73	103	132	149			45	74	104						118
22	37	64	90	116	143			39	65	91	113					118
24	32	56	80	104	128	138		34	58	81	105					118
SSL	26	28	50	72	93	115	126	26	30	51	73	95	116			117
28	25	45	65	85	104	114	114	28	26	46	66	86	106	116		116
30	22	40	59	77	96	105	105	30	23	42	60	79	97	106	106	
34	17	33	49	65	81	89	89	34	19	35	51	67	83	91	91	
38	14	28	42	56	70	77	77	38	15	30	44	58	72	79	79	
42	11	24	37	49	62	68	68	42	12	25	38	51	63	70	70	
46	9	20	32	43	55	61	61	46	10	22	33	45	56	62	62	
50	6	18	28	39	49	54	54	50	8	19	29	40	50	56	56	
54	5	15	25	35	44	49	49	54	6	17	26	36	46	50	50	
58	4	13	23	31	40	45	45	58	5	15	24	33	41	46	46	
								62	4	13	21	30	38	42	42	
								66	3	11	19	27	35	39	39	
								70		10	18	25	32	36	36	

Radio Radius m	72 m Pluma principal / Main boom						
							
	0	40	80	120	160	180	200
	t	t	t	t	t	t	t
10	121	124					141
12	97	124					141
14	76	122	131				141
16	61	100	131				141
18	51	85	118	134			141
20	43	73	102	129			137
22	37	63	90	116	133		133
24	32	56	79	103	127		129
SSL	26	28	49	71	93	114	125
28	24	44	64	84	104	114	114
30	21	40	58	77	95	104	104
34	17	33	49	65	81	89	89
38	13	27	42	56	70	77	77
42	10	23	36	49	61	67	67
46	8	20	31	43	54	60	60
50	6	17	28	38	48	54	54
54	4	14	24	34	44	48	48
58	3	12	22	31	40	44	44
62		11	19	28	36	40	40

Radio Radius m	84 m Pluma principal / Main boom						
							
	0	40	80	120	160	180	200
	t	t	t	t	t	t	t
12	89	91					100
14	76	91					100
16	63	91					100
18	52	86	94				100
20	44	74	94				100
22	38	65	91				99
24	33	57	81	96			99
26	29	51	73	94			97
SSL/LSL	28	26	46	66	86		95
30	23	41	60	78			92
34	18	34	50	66	82		84
38	15	29	43	57	71		75
42	12	25	37	50	63	68	68
46	9	21	33	44	56	61	61
50	7	18	29	39	50	55	55
54	6	16	26	35	45	50	50
58	4	14	23	32	41	45	45
62	3	12	21	29	37	41	41
66		10	19	26	34	37	37
70		9	17	24	32	33	33
74		8	15	22	29	29	29

90 t		7,25 m		SL-Radius 13 m		360°		DIN / ISO								
Radio Radius m	90 m Pluma principal / Main boom							Radio Radius m	102 m Pluma principal / Main boom							
	0	40	80	120	160	180	200		0	40	80	120	160	180	200	
	t	t	t	t	t	t	t		t	t	t	t	t	t	t	t
12	77							12	57							62
14	74	78						14	57							62
16	61	78						16	57	57						62
18	52	78						18	49	57						62
20	44	74	79					20	41	57						62
22	38	64	79					22	36	57						61
24	33	57	79					24	31	56						61
26	29	51	72					26	27	50	57					60
SSL	28	26	46	65	80			28	24	45	57					60
	30	23	41	60	78			30	21	40	57					59
	34	18	34	50	66			34	17	33	49	57				57
	38	14	29	43	57			38	13	28	42	55				56
	42	11	25	37	50	62		42	10	24	36	49				54
	46	9	21	33	44	55	60	46	8	20	32	43	52			52
	50	7	18	29	39	50	54	50	6	17	28	38	49			50
	54	5	16	25	35	45	47	54	4	15	25	34	44	47		47
	58	4	14	23	32	41		58	3	13	22	31	40	44	44	44
	62	3	12	20	29	36		62		11	19	28	36	40	41	41
	66		10	18	26	31		66		9	17	25	33	37	38	38
	70		9	16	24	27		70		8	15	23	30	34	36	36
	74		8	15	22	24		74		6	14	21	28	31	33	33
	78		6	13	20	23		78		5	12	19	26	29	30	30
								82		4	11	18	24	27	28	28
								86		3	10	16	22	25	25	25
								90		3	9	15	21	23	23	23

Radio Radius m	96 m Pluma principal / Main boom						
	0	40	80	120	160	180	200
	t	t	t	t	t	t	t
12	66						70
14	66	67					70
16	60	67					69
18	50	67					69
20	43	66					68
22	37	64	66				67
24	32	56	65				66
26	28	50	65				66
SSL	28	25	45	64			65
	30	22	41	59			64
	34	17	34	50	61		62
	38	14	28	42	57		60
	42	11	24	37	49		57
	46	8	21	32	43	55	55
	50	6	18	28	39	49	52
	54	5	15	25	35	44	49
	58	3	13	22	31	40	45
	62		11	20	28	36	41
	66		9	18	26	33	37
	70		8	16	23	31	34
	74		7	14	21	28	32
	78		6	13	20	26	29
	82		5	11	18	24	27

Radio Radius m	108 m Pluma principal / Main boom						
	0	40	80	120	160	180	
	t	t	t	t	t	t	t
14	43						47
16	42						46
18	42	43					45
20	40	42					44
22	34	41					42
24	29	39					41
26	26	38					39
28	22	36					37
SSL/LSL	30	20	35				35
	34	15	32	32			32
	38	12	27	29			29
	42	9	23	27			27
	46	7	19	25			25
	50	5	16	24			24
	54	3	14	22			22
	58		12	21	21		21
	62		10	19	20		20
	66		8	16	19		20
	70		7	15	19		19
	74		6	13	18		18
	78		4	11	17		18
	82		3	10	17	17	17
	86		3	9	15	17	17
	90			8	14	16	16
	94			7	13	15	15

DEMAG CC 1800

DIAGRAMA DE ALCANCES / WORKING RANGES
 SSL, SSL / LSL

300 t

